

Source: NRCS Soil Survey

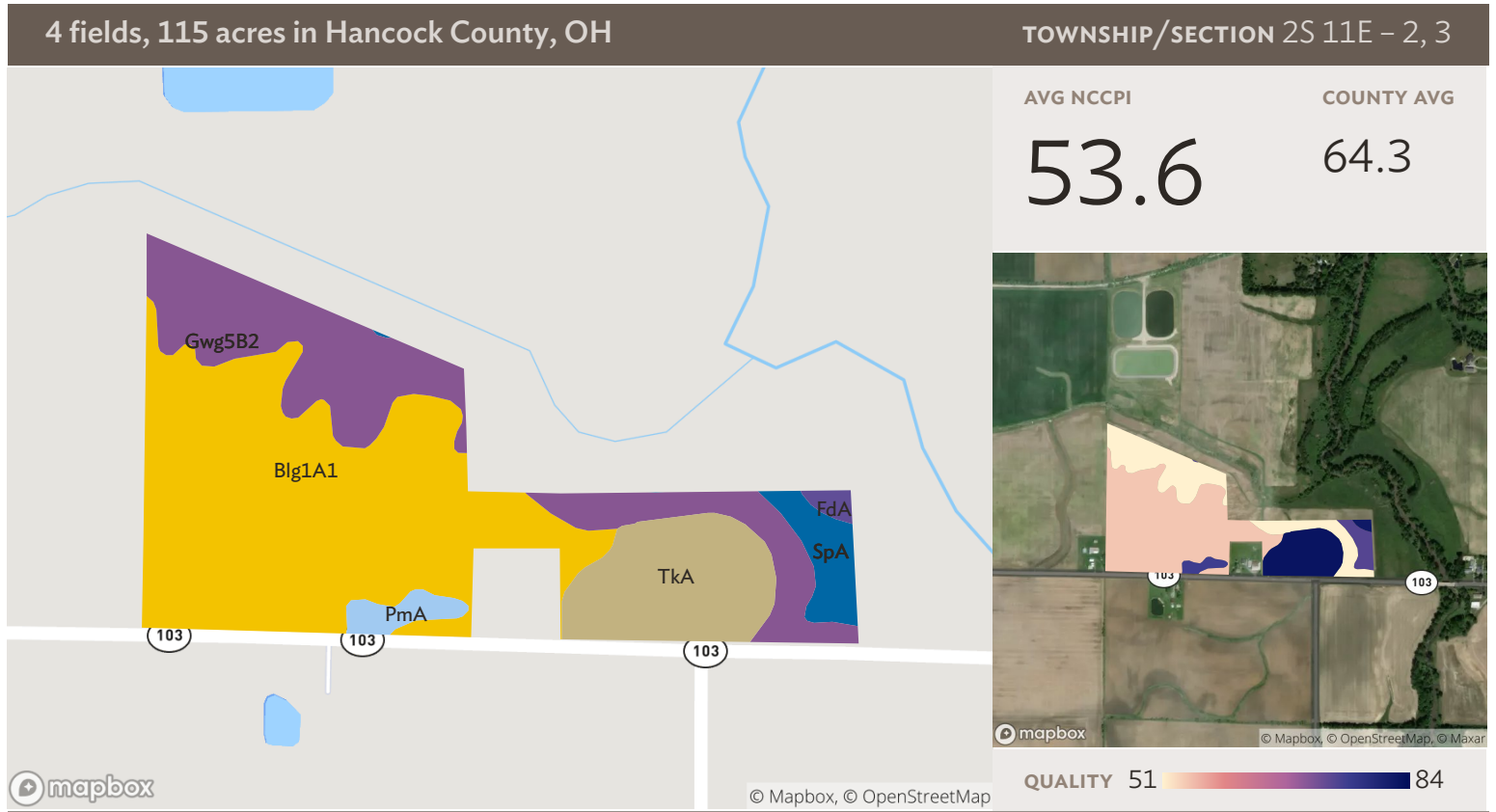
All fields

115 ac

SOIL CODE	SOIL DESCRIPTION	ACRES	PERCENTAGE OF FIELD	SOIL CLASS	NCCPI
Blg1A1	Blount silt loam, ground moraine, 0 to 2 percent slopes	53.19	46.3%	2	54.3
Gwg5B2	Glynwood clay loam, ground moraine, 2 to 6 percent slopes, eroded	15.45	13.5%	2	29.9
Gwg1B1	Glynwood silt loam, ground moraine, 2 to 6 percent slopes	8.91	7.8%	2	50.0
PmA	Pewamo silty clay loam, 0 to 1 percent slopes	7.83	6.8%	2	75.6
BpA	Blount-Houcktown complex, 0 to 3 percent slopes	6.19	5.4%	2	65.0
TkA	Tiderishi loam, 0 to 2 percent slopes	6.14	5.3%	2	82.7
Blg1B1	Blount silt loam, ground moraine, 2 to 4 percent slopes	4.51	3.9%	2	50.8
Gwg5C2	Glynwood clay loam, ground moraine, 6 to 12 percent slopes, eroded	4.18	3.6%	3	29.4
RhA	Rensselaer loam, till substratum, 0 to 1 percent slopes	3.69	3.2%	2	88.1

4 fields, 115 acres in Hancock County, OH
TOWNSHIP/SECTION 2S 11E - 2, 3

■ SpA	Sloan silty clay loam, limestone substratum, 0 to 1 percent slopes, occasionally flooded	2.05	1.8%	3	73.9
■ HpB	Houcktown loam, 2 to 6 percent slopes	1.90	1.7%	2	63.3
■ FdA	Flatrock silt loam, limestone substratum, 0 to 2 percent slopes, occasionally flooded	0.31	0.3%	2	81.9
■ MpD3	Morley clay loam, 12 to 18 percent slopes, severely eroded	0.30	0.3%	6	24.0
■ SeB	Shawtown loam, 2 to 6 percent slopes	0.19	0.2%	2	76.9
		114.83			54.8

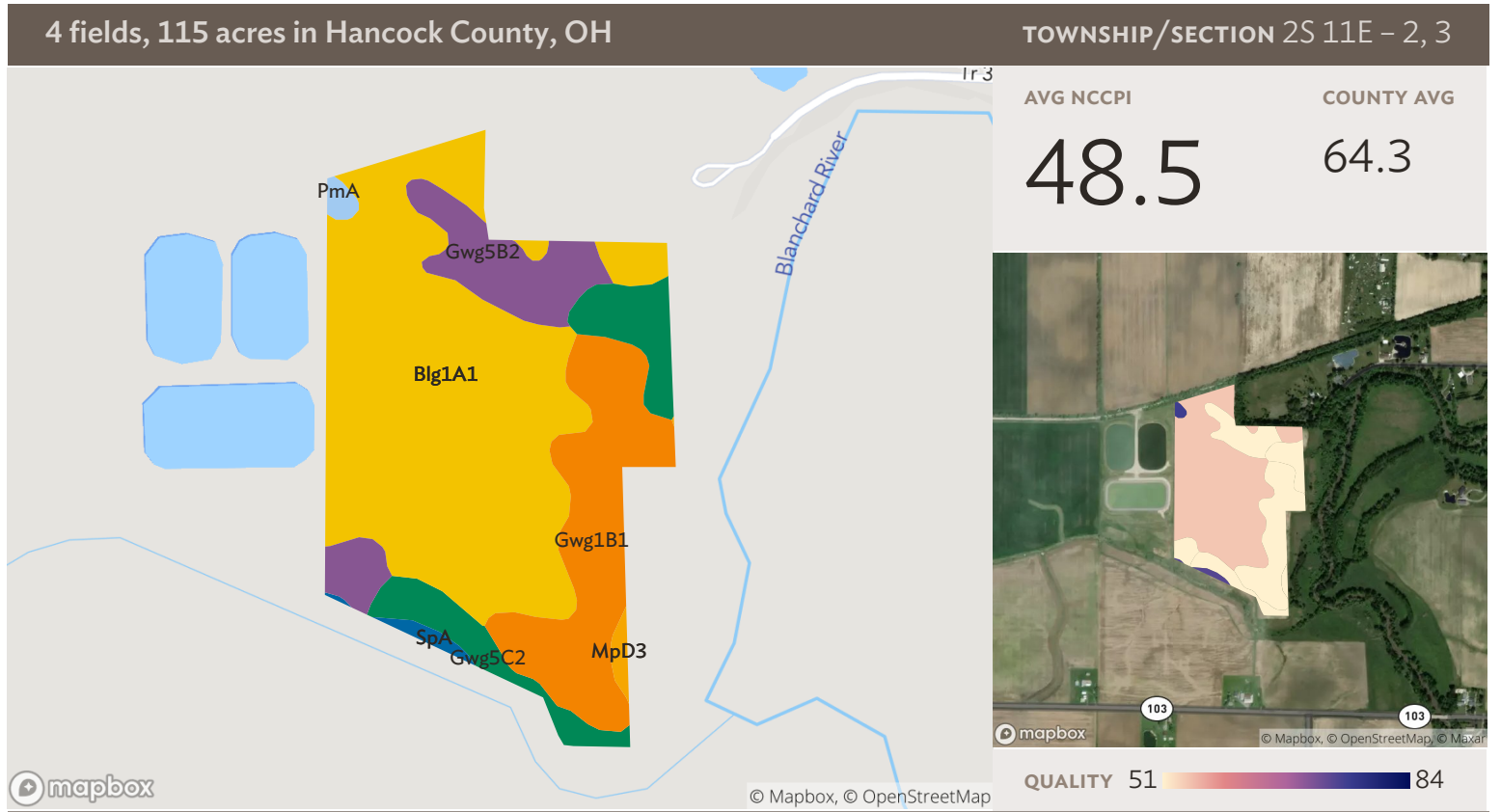


Field 1

Source: NRCS Soil Survey

43 ac

SOIL CODE	SOIL DESCRIPTION	ACRES	PERCENTAGE OF FIELD	SOIL CLASS	NCCPI
■ Blg1A1	Blount silt loam, ground moraine, 0 to 2 percent slopes	22.85	53.3%	2	54.3
■ Gwg5B2	Glynwood clay loam, ground moraine, 2 to 6 percent slopes, eroded	10.94	25.5%	2	29.9
■ TkA	Tiderishi loam, 0 to 2 percent slopes	6.14	14.3%	2	82.7
■ SpA	Sloan silty clay loam, limestone substratum, 0 to 1 percent slopes, occasionally flooded	1.70	4.0%	3	73.9
■ PmA	Pewamo silty clay loam, 0 to 1 percent slopes	0.90	2.1%	2	75.6
■ FdA	Flatrock silt loam, limestone substratum, 0 to 2 percent slopes, occasionally flooded	0.31	0.7%	2	81.9
					42.84
					53.6

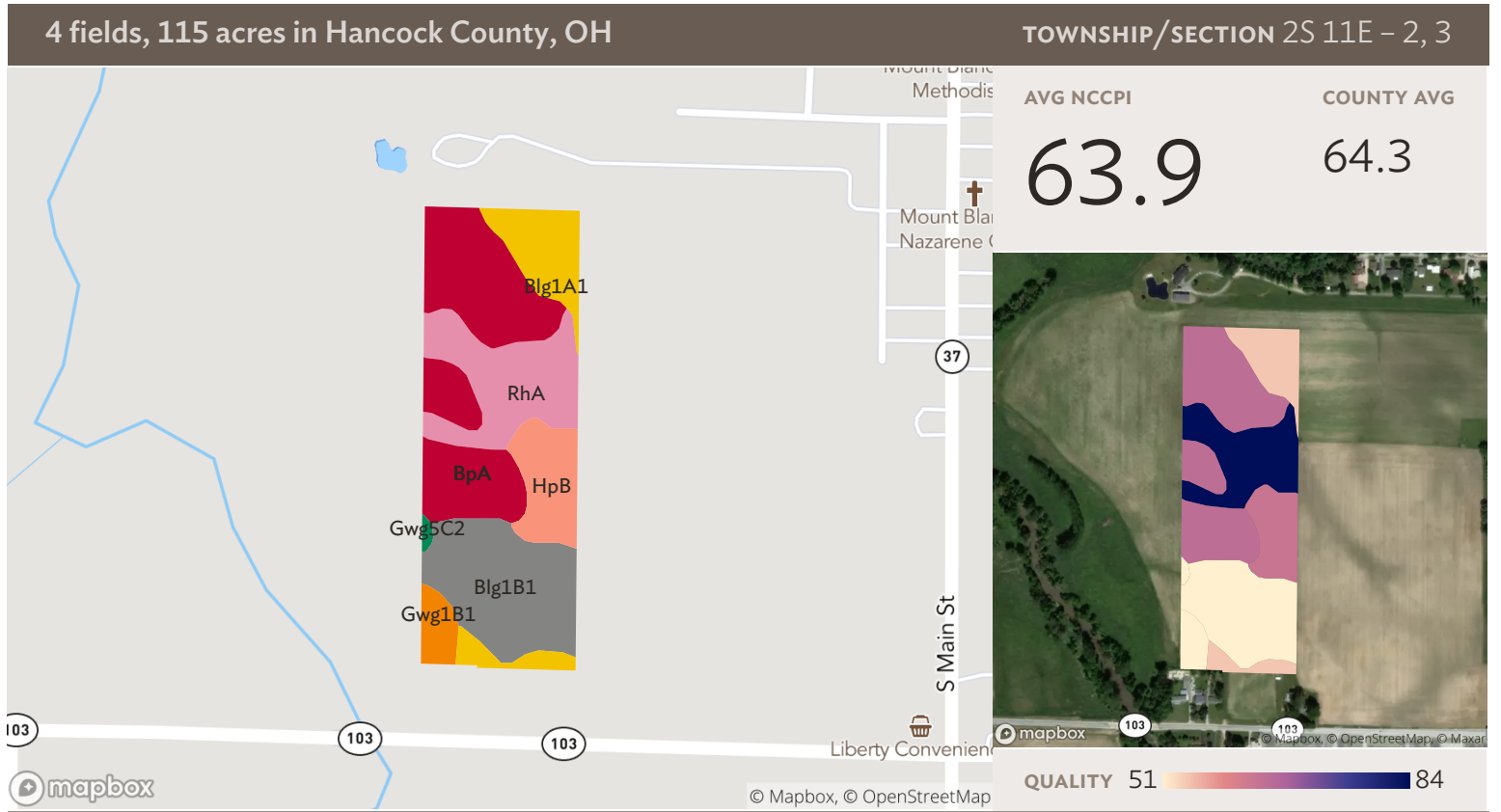


Field 2

Source: NRCS Soil Survey

42 ac

SOIL CODE	SOIL DESCRIPTION	ACRES	PERCENTAGE OF FIELD	SOIL CLASS	NCCPI
Blg1A1	Blount silt loam, ground moraine, 0 to 2 percent slopes	24.29	57.8%	2	54.3
Gwg1B1	Glynwood silt loam, ground moraine, 2 to 6 percent slopes	8.23	19.6%	2	50.0
Gwg5B2	Glynwood clay loam, ground moraine, 2 to 6 percent slopes, eroded	4.51	10.7%	2	29.9
Gwg5C2	Glynwood clay loam, ground moraine, 6 to 12 percent slopes, eroded	4.09	9.7%	3	29.4
SpA	Sloan silty clay loam, limestone substratum, 0 to 1 percent slopes, occasionally flooded	0.34	0.8%	3	73.9
MpD3	Morley clay loam, 12 to 18 percent slopes, severely eroded	0.30	0.7%	6	24.0
PmA	Pewamo silty clay loam, 0 to 1 percent slopes	0.28	0.7%	2	75.6
		42.04			48.5

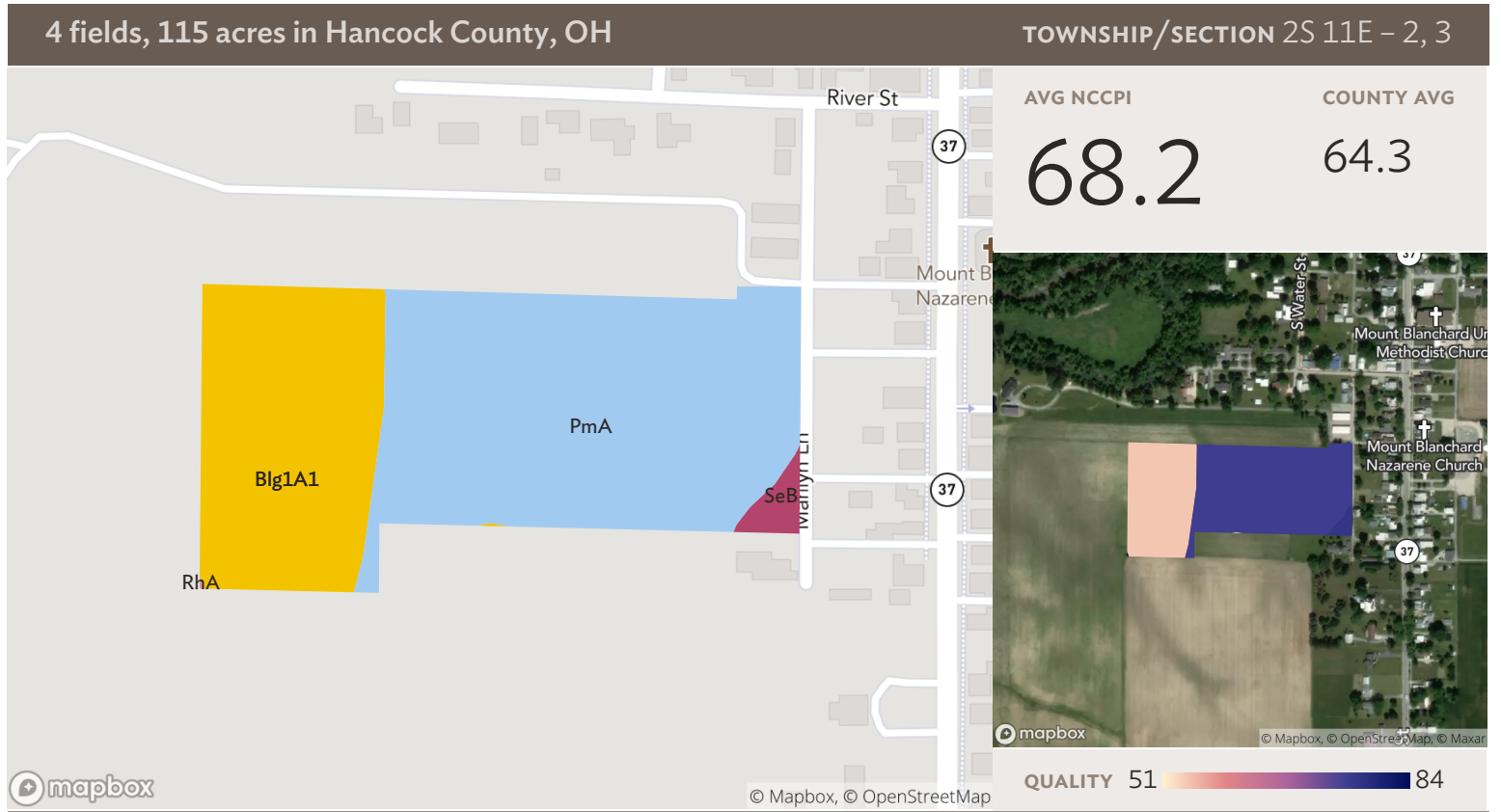


Field 3

Source: NRCS Soil Survey

19 ac

SOIL CODE	SOIL DESCRIPTION	ACRES	PERCENTAGE OF FIELD	SOIL CLASS	NCCPI
■ BpA	Blount-Houcktown complex, 0 to 3 percent slopes	6.19	31.8%	2	65.0
■ Blg1B1	Blount silt loam, ground moraine, 2 to 4 percent slopes	4.51	23.2%	2	50.8
■ RhA	Rensselaer loam, till substratum, 0 to 1 percent slopes	3.68	18.9%	2	88.1
■ Blg1A1	Blount silt loam, ground moraine, 0 to 2 percent slopes	2.40	12.3%	2	54.3
■ HpB	Houcktown loam, 2 to 6 percent slopes	1.90	9.8%	2	63.3
■ Gwg1B1	Glynwood silt loam, ground moraine, 2 to 6 percent slopes	0.68	3.5%	2	50.0
■ Gwg5C2	Glynwood clay loam, ground moraine, 6 to 12 percent slopes, eroded	0.09	0.4%	3	29.4
19.45					63.9



Field 4

Source: NRCS Soil Survey

10 ac

SOIL CODE	SOIL DESCRIPTION	ACRES	PERCENTAGE OF FIELD	SOIL CLASS	NCCPI	
PmA	Pewamo silty clay loam, 0 to 1 percent slopes	6.65	63.4%	2	75.6	
Blg1A1	Blount silt loam, ground moraine, 0 to 2 percent slopes	3.65	34.8%	2	54.3	
SeB	Shawtown loam, 2 to 6 percent slopes	0.19	1.8%	2	76.9	
RhA	Rensselaer loam, till substratum, 0 to 1 percent slopes	0.00	0.0%	2	88.1	
					10.50	68.2