



REAL ESTATE  
& LAND COMPANY

New

# LANDLISTING

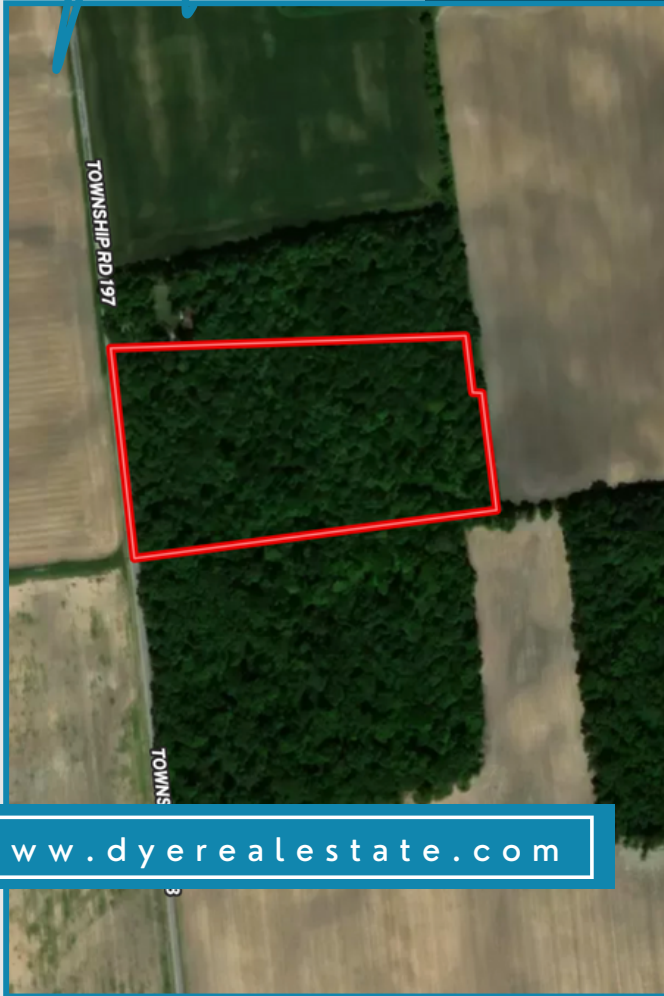
## 12+ ACRES

LOGAN & HARDIN  
COUNTY

000 Township Road 138,  
Ridgeway, OH 43345

ASKING PRICE:

### \$129,000



*Approximately 12 acres of wooded land that is in Logan and Hardin County. This rural property has a ton of potential. Nearly 9 acres is in Logan County and Roughly 3 acres are in Hardin County. If you are looking for a beautiful recreational getaway that boasts an abundance of wildlife potential, or a possible home site look no further! Here is your chance to own a piece of the outdoors.*



MATT BOWERS  
Realtor/Auctioneer  
567-204-7462