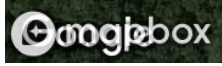
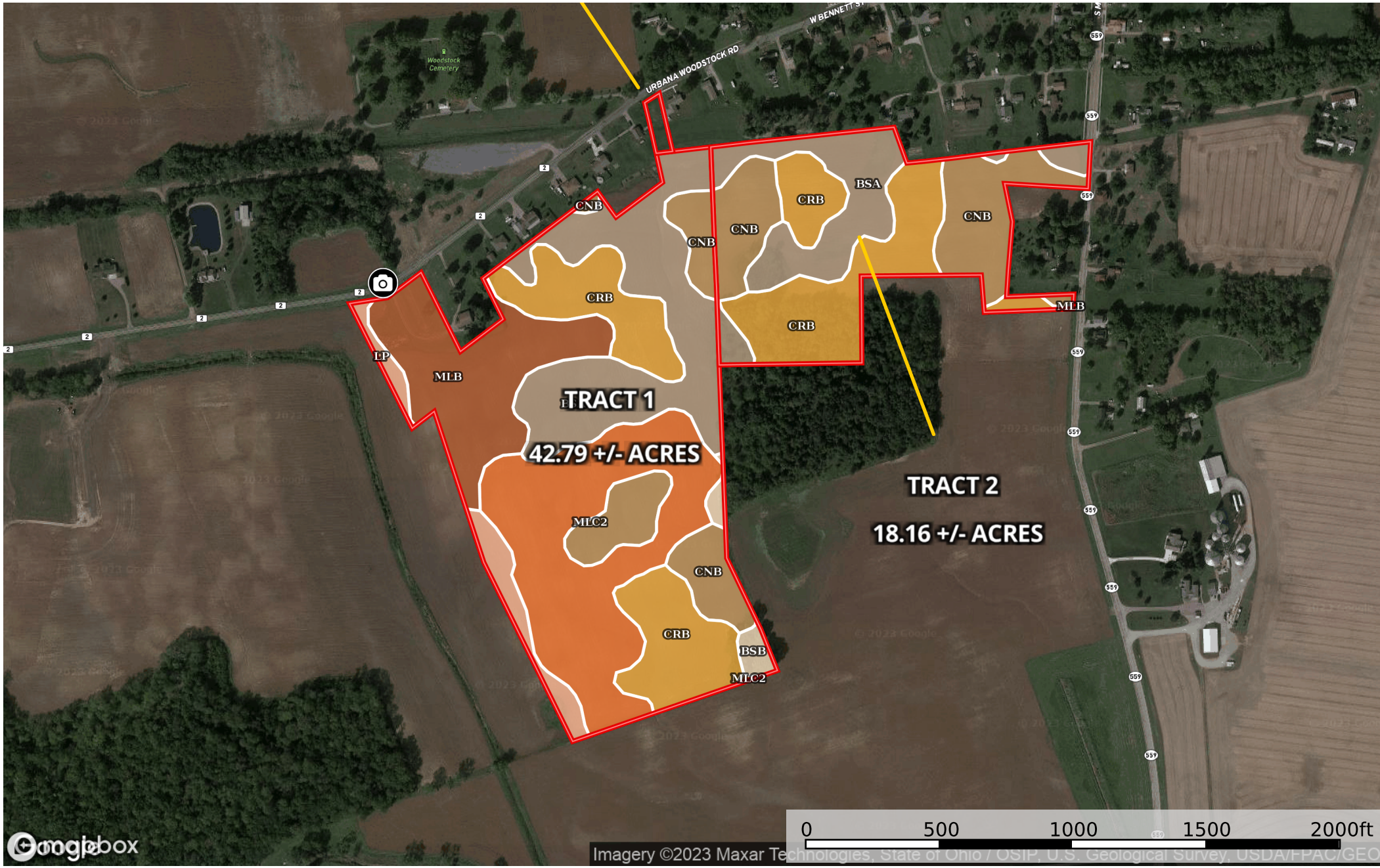


# 61.371 acres Champaign County Proctor Run

Champaign County, Ohio, AC +/-



Imagery ©2023 Maxar Technologies, State of Ohio / OSIP, U.S. Geological Survey, USDA/FPAC/GEO

Photo Point    Direction    Boundary

|  All Polygons 60.96 ac

SOIL CODE	SOIL DESCRIPTION	ACRES	%	CPI	NCCPI	CAP
BsA	Brookston silty clay loam, fine texture, 0 to 2 percent slopes	14.6	23.95	0	71	2w
CrB	Crosby silt loam, Southern Ohio Till Plain, 2 to 6 percent slopes	14.58	23.92	0	57	2e
MIC2	Miami silt loam, 6 to 12 percent slopes, eroded	11.65	19.11	0	55	3e
CnB	Celina silt loam, 2 to 6 percent slopes	10.3	16.9	0	69	2e
MIB	Miami silt loam, 2 to 6 percent slopes	7.21	11.83	0	72	2e
Lp	Lippincott silty clay loam, 0 to 2 percent slopes	1.93	3.17	0	56	2w
BsB	Brookston silty clay loam, 2 to 6 percent slopes	0.69	1.13	0	82	2w
TOTALS		60.96(*)	100%	-	64.03	2.19

(\*) Total acres may differ in the second decimal compared to the sum of each acreage soil. This is due to a round error because we only show the acres of each soil with two decimal.

|  Boundary 42.81 ac

SOIL CODE	SOIL DESCRIPTION	ACRES	%	CPI	NCCPI	CAP
MIC2	Miami silt loam, 6 to 12 percent slopes, eroded	11.65	27.23	0	55	3e
BsA	Brookston silty clay loam, fine texture, 0 to 2 percent slopes	9.35	21.85	0	71	2w
CrB	Crosby silt loam, Southern Ohio Till Plain, 2 to 6 percent slopes	7.41	17.32	0	57	2e
MIB	Miami silt loam, 2 to 6 percent slopes	7.2	16.83	0	72	2e
CnB	Celina silt loam, 2 to 6 percent slopes	4.58	10.7	0	69	2e
Lp	Lippincott silty clay loam, 0 to 2 percent slopes	1.93	4.51	0	56	2w
BsB	Brookston silty clay loam, 2 to 6 percent slopes	0.69	1.61	0	82	2w
TOTALS		42.81(*)	100%	-	63.71	2.27

(\*) Total acres may differ in the second decimal compared to the sum of each acreage soil. This is due to a round error because we only show the acres of each soil with two decimal.

|  Boundary 18.15 ac

SOIL CODE	SOIL DESCRIPTION	ACRES	%	CPI	NCCPI	CAP
CrB	Crosby silt loam, Southern Ohio Till Plain, 2 to 6 percent slopes	7.17	39.48	0	57	2e
CnB	Celina silt loam, 2 to 6 percent slopes	5.72	31.5	0	69	2e
BsA	Brookston silty clay loam, fine texture, 0 to 2 percent slopes	5.25	28.91	0	71	2w
MIB	Miami silt loam, 2 to 6 percent slopes	0.01	0.06	0	72	2e
TOTALS		18.15(*)	100%	-	64.8	2.0









(\*) Total acres may differ in the second decimal compared to the sum of each acreage soil. This is due to a round error because we only show the acres of each soil with two decimal.

## Capability Legend

Increased Limitations and Hazards

Decreased Adaptability and Freedom of Choice Users

Land, Capability

								
	1	2	3	4	5	6	7	8
'Wild Life'	•	•	•	•	•	•	•	•
Forestry	•	•	•	•	•	•	•	
Limited	•	•	•	•	•	•	•	
Moderate	•	•	•	•	•	•		
Intense	•	•	•	•	•			
Limited	•	•	•	•				
Moderate	•	•	•					
Intense	•	•						
Very Intense	•							

### Grazing Cultivation

(c) climatic limitations (e) susceptibility to erosion

(s) soil limitations within the rooting zone (w) excess of water