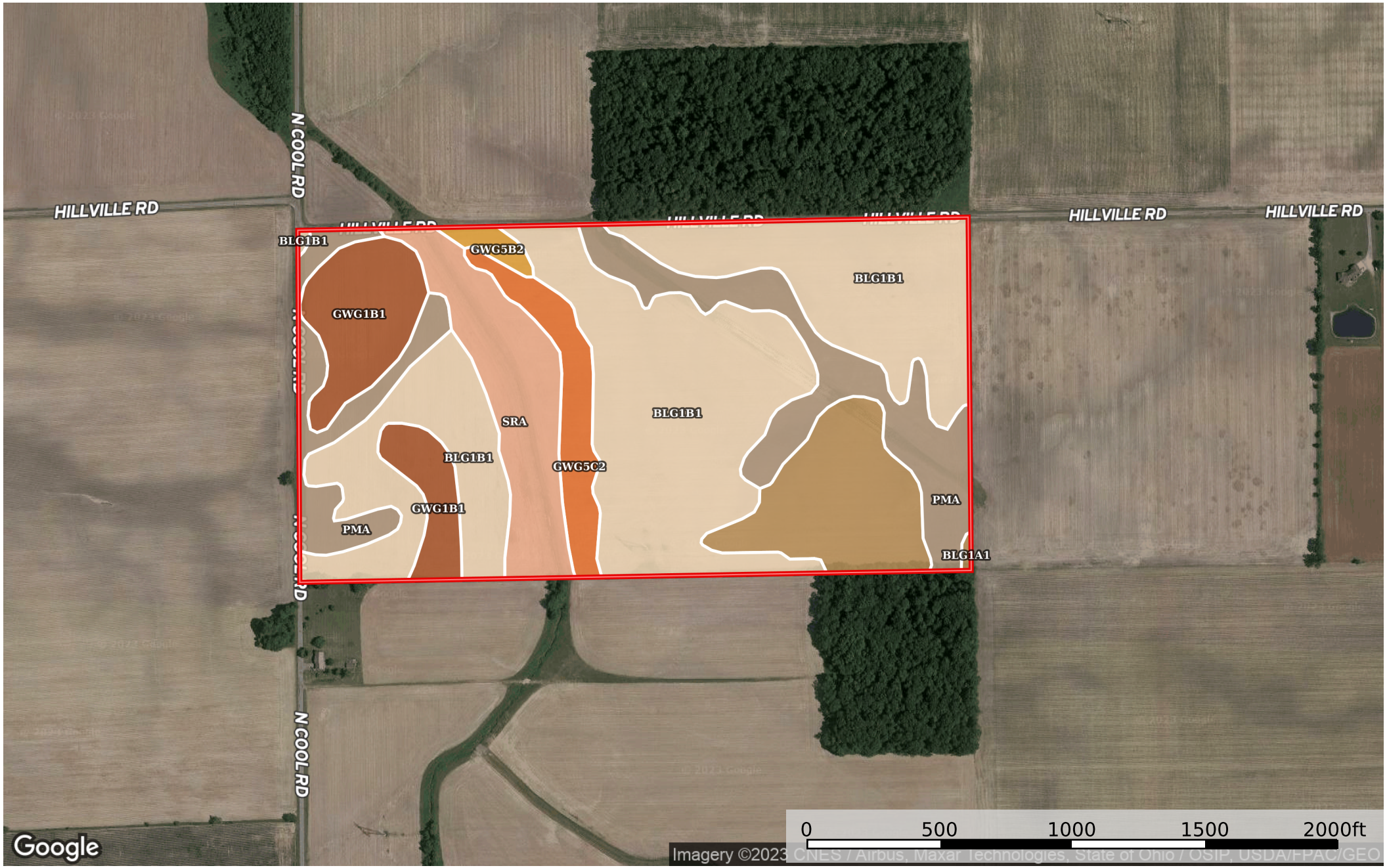


76.99 Allen County Craig Burkholder

Allen County, Ohio, 76.99 AC +/-



Google

Imagery ©2023 CNES / Airbus, Maxar, Technologies, State of Ohio / OSIP, USDA/FPAIC/Geo

→ Direction □ Boundary

|  Boundary 77.03 ac

SOIL CODE	SOIL DESCRIPTION	ACRES	%	CPI	NCCPI	CAP
Blg1B1	Blount silt loam, ground moraine, 2 to 4 percent slopes	37.53	48.73	0	67	2e
PmA	Pewamo silty clay loam, 0 to 1 percent slopes	12.67	16.45	0	76	2w
SrA	Sloan silty clay loam, till substratum, 0 to 1 percent slopes, frequently flooded	7.58	9.84	62	56	3w
Blg1A1	Blount silt loam, ground moraine, 0 to 2 percent slopes	7.53	9.78	0	69	2w
Gwg1B1	Glynwood silt loam, ground moraine, 2 to 6 percent slopes	7.29	9.47	0	67	2e
Gwg5C2	Glynwood clay loam, ground moraine, 6 to 12 percent slopes, eroded	3.72	4.83	65	57	3e
Gwg5B2	Glynwood clay loam, ground moraine, 2 to 6 percent slopes, eroded	0.71	0.92	0	56	2e
TOTALS		77.03(*)	100%	9.24	67.02	2.15

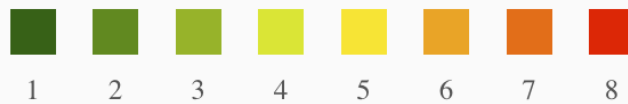
(*) Total acres may differ in the second decimal compared to the sum of each acreage soil. This is due to a round error because we only show the acres of each soil with two decimal.

Capability Legend

Increased Limitations and Hazards

Decreased Adaptability and Freedom of Choice Users

Land, Capability



'Wild Life'	•	•	•	•	•	•	•	•
Forestry	•	•	•	•	•	•	•	
Limited	•	•	•	•	•	•	•	
Moderate	•	•	•	•	•	•		
Intense	•	•	•	•	•			
Limited	•	•	•	•				
Moderate	•	•	•					
Intense	•	•						
Very Intense	•							

Grazing Cultivation

(c) climatic limitations (e) susceptibility to erosion

(s) soil limitations within the rooting zone (w) excess of water