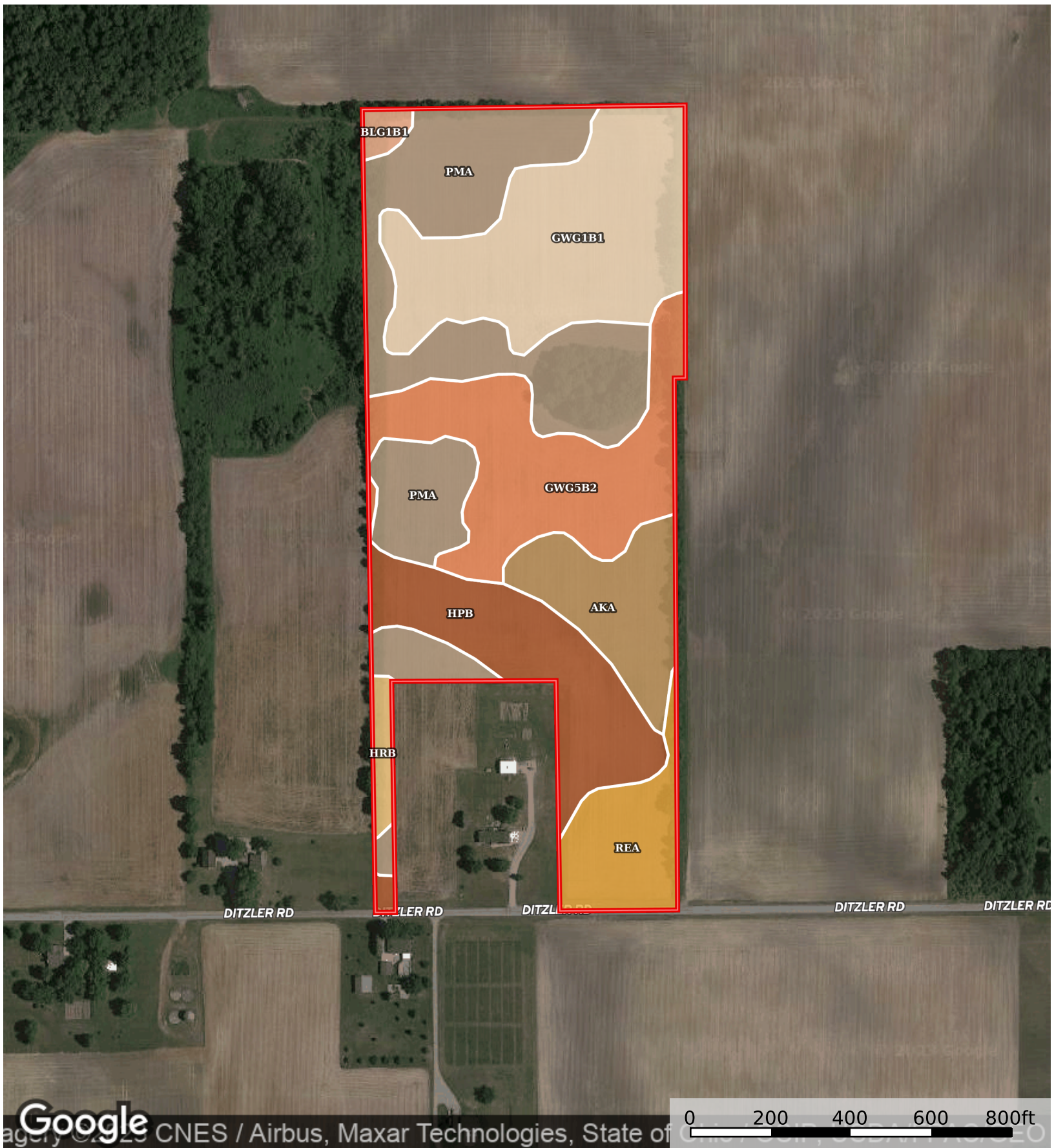


29.59 Acres Allen County (Burkholder)

Allen County, Ohio, 29.59 AC +/-



Boundary

I  Boundary 30.24 ac

SOIL CODE	SOIL DESCRIPTION	ACRES	%	CPI	NCCPI	CAP
PmA	Pewamo silty clay loam, 0 to 1 percent slopes	8.57	28.35	0	76	2w
Gwg1B1	Glynwood silt loam, ground moraine, 2 to 6 percent slopes	6.63	21.93	0	67	2e
Gwg5B2	Glynwood clay loam, ground moraine, 2 to 6 percent slopes, eroded	5.38	17.8	0	56	2e
HpB	Houcktown sandy loam, 2 to 4 percent slopes	4.09	13.53	65	66	2e
AkA	Alvada loam, 0 to 1 percent slopes	2.66	8.8	80	80	2w
ReA	Rensselaer loam, till substratum, 0 to 1 percent slopes	2.17	7.18	90	88	2w
HrB	Houcktown loam, 2 to 6 percent slopes	0.45	1.49	71	69	2e
Blg1B1	Blount silt loam, ground moraine, 2 to 4 percent slopes	0.29	0.96	0	67	2e
TOTALS		30.24(*)	100%	23.35	70.16	2.0

(*) Total acres may differ in the second decimal compared to the sum of each acreage soil. This is due to a round error because we only show the acres of each soil with two decimal.

