

REAL ESTATE & LAND COMPANY

www.dyerealestate.com

LAND LISTING



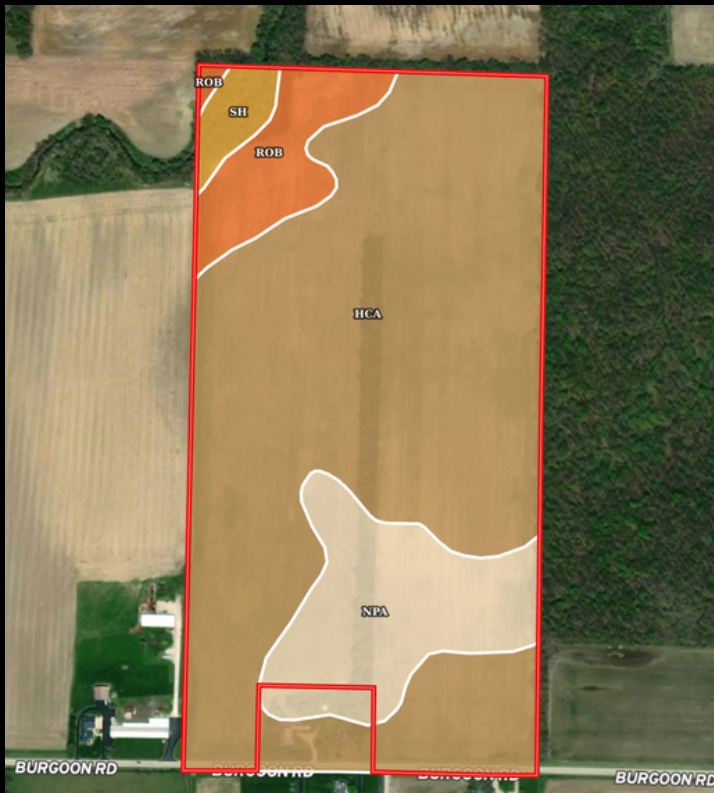
76 +/- ACRES SANDUSKY COUNTY

Total Acres: 76
Tillable Acres: 70.02
Wooded Acres: 2.29
School District: Lakota
Tile: Some
NCCPI: 65.96

ASKING PRICE: \$12,500/ACRE

Don Cochran
DON COCHRAN
REALTOR - AUCTION MANAGER
419-934-0651

SOILMAP



Annual 2021
Real Estate Taxes:
\$2545.00



Located on 3918
County Road 13
Burgoon, Ohio.

Great location with
multiple uses!

SOIL CODE	SOIL DESCRIPTION	ACRES	%	CPI	NCCPI	CAP
Ble1B1	Blount silt loam, end moraine, 2 to 4 percent slopes	44.36	28.52	0	60	2e
Ble1A1	Blount silt loam, end moraine, 0 to 2 percent slopes	36.77	23.64	0	62	2w
PmA	Pewamo silty clay loam, 0 to 1 percent slopes	29.2	18.77	0	77	2w
Gwe1B1	Glynwood silt loam, end moraine, 2 to 6 percent slopes	20.45	13.15	0	60	2e
Blg2A1	Blount loam, ground moraine, 0 to 2 percent slopes	9.42	6.06	0	61	2w
SmA	Shoals silt loam, 0 to 2 percent slopes, occasionally flooded	8.52	5.48	0	75	2w
Gwe5B2	Glynwood clay loam, end moraine, 2 to 6 percent slopes, eroded	4.09	2.63	0	49	2e
HpB	Houcktown loam, 2 to 6 percent slopes	2.61	1.68	67	65	2e
Gwd5C2	Glynwood clay loam, 6 to 12 percent slopes, eroded	0.1	0.06	63	49	4e
TOTALS		155.5 2(*)	100%	1.16	64.33	2.0



Don Cochran
419-934-0651
Cochran.donald@gmail.com