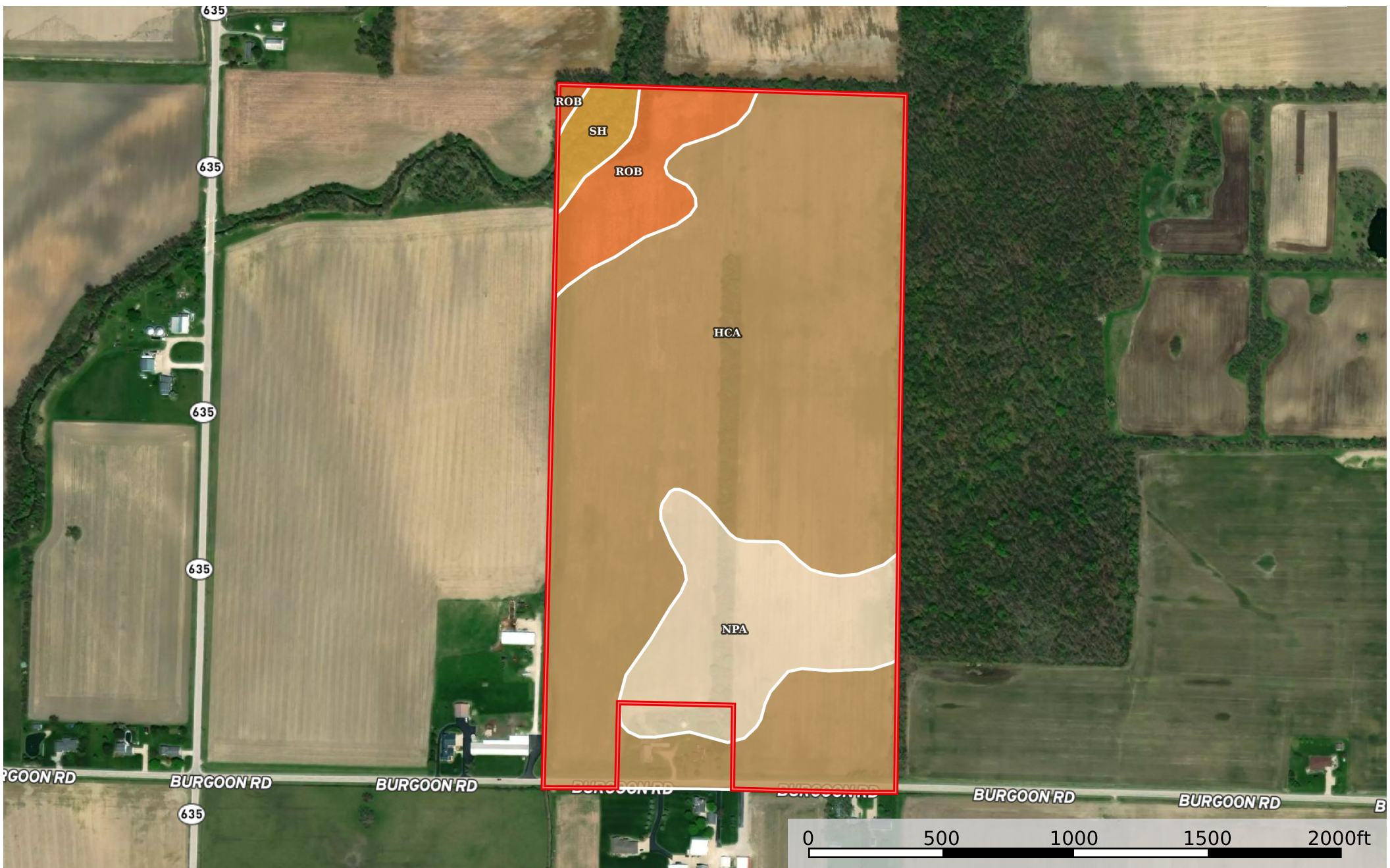



Green Maples Farm

Ohio, AC +/-



 Boundary

|  Boundary 78.88 ac

SOIL CODE	SOIL DESCRIPTION	ACRES	%	CPI	NCCPI	CAP
HcA	Hoytville silty clay loam, 0 to 1 percent slopes	58.57	74.24	82	67	2w
NpA	Nappanee silt loam, 0 to 3 percent slopes	12.55	15.91	0	62	3w
RoB	Rimer loamy fine sand, 1 to 4 percent slopes	5.87	7.44	0	59	2e
Sh	Shoals silt loam, frequently flooded	1.89	2.4	0	82	2w
TOTALS		78.88(*)	100%	60.88	65.96	2.16

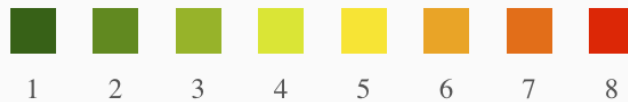
(*) Total acres may differ in the second decimal compared to the sum of each acreage soil. This is due to a round error because we only show the acres of each soil with two decimal.

Capability Legend

Increased Limitations and Hazards

Decreased Adaptability and Freedom of Choice Users

Land, Capability



'Wild Life'	•	•	•	•	•	•	•	•
Forestry	•	•	•	•	•	•	•	
Limited	•	•	•	•	•	•	•	
Moderate	•	•	•	•	•	•		
Intense	•	•	•	•	•			
Limited	•	•	•	•				
Moderate	•	•	•					
Intense	•	•						
Very Intense	•							

Grazing Cultivation

(c) climatic limitations (e) susceptibility to erosion

(s) soil limitations within the rooting zone (w) excess of water