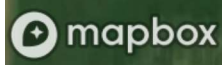
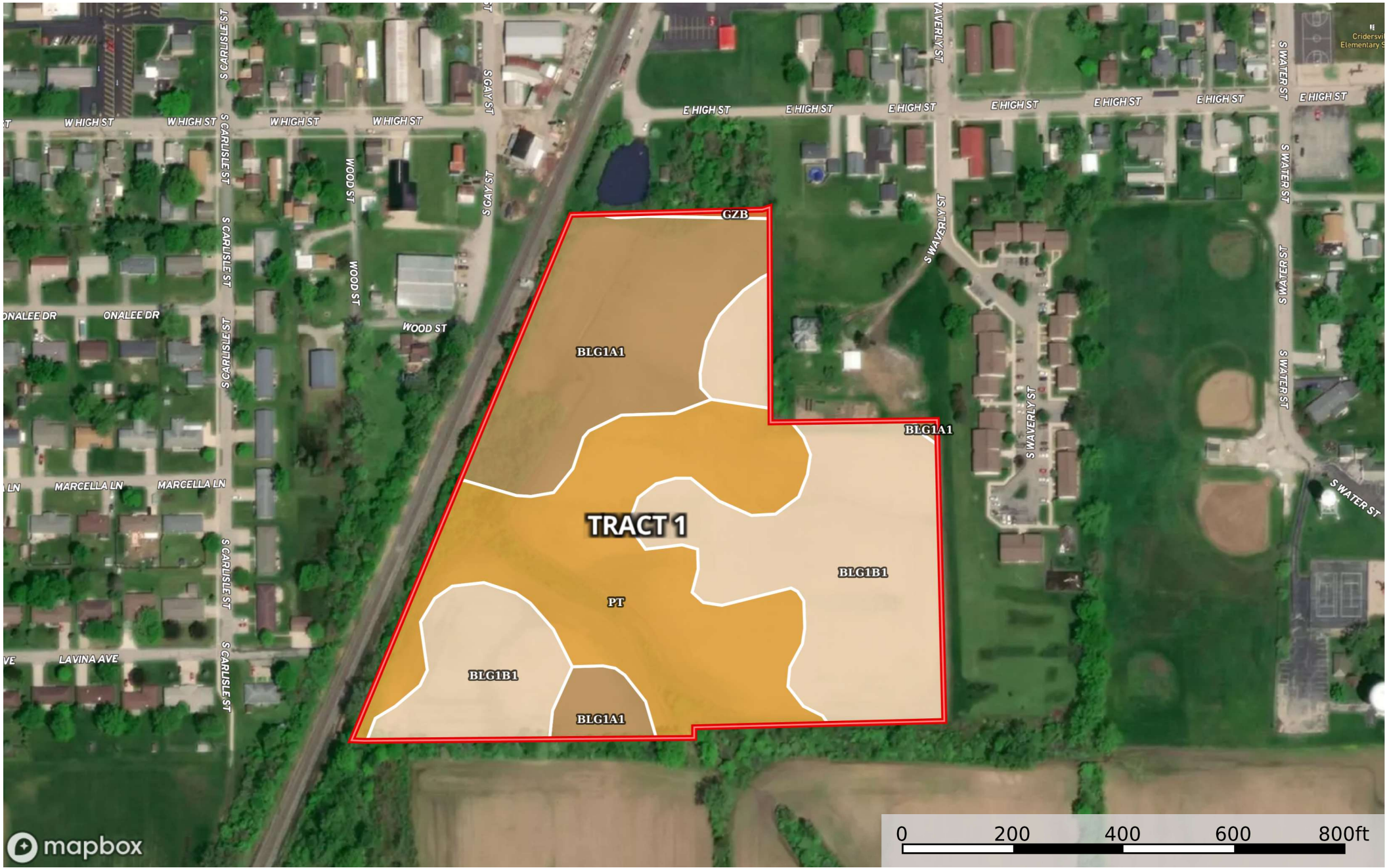


97.96 Acres Auglaize County (Dunlap)

Auglaize County, Ohio, 97.96 AC +/-



Boundary

Boundary 15.92 ac

SOIL CODE	SOIL DESCRIPTION	ACRES	%	CPI	NCCPI	CAP
Blg1B1	Blount silt loam, ground moraine, 2 to 4 percent slopes	6.23	39.13	0	67	2e
Pt	Pewamo silty clay loam, 0 to 1 percent slopes	5.54	34.8	0	76	2w
Blg1A1	Blount silt loam, ground moraine, 0 to 2 percent slopes	4.08	25.63	0	69	2w
GzB	Glynwood-Urban land complex, 2 to 6 percent slopes	0.07	0.44	33	38	-
TOTALS		15.92(*)	100%	0.15	70.52	2.0

(*) Total acres may differ in the second decimal compared to the sum of each acreage soil. This is due to a round error because we only show the acres of each soil with two decimal.

Capability Legend

Increased Limitations and Hazards

Decreased Adaptability and Freedom of Choice Users

Land, Capability



'Wild Life'	•	•	•	•	•	•	•	•
Forestry	•	•	•	•	•	•	•	•
Limited	•	•	•	•	•	•	•	•
Moderate	•	•	•	•	•	•	•	•
Intense	•	•	•	•	•	•	•	•
Limited	•	•	•	•	•	•	•	•
Moderate	•	•	•	•	•	•	•	•
Intense	•	•	•	•	•	•	•	•
Very Intense	•	•	•	•	•	•	•	•

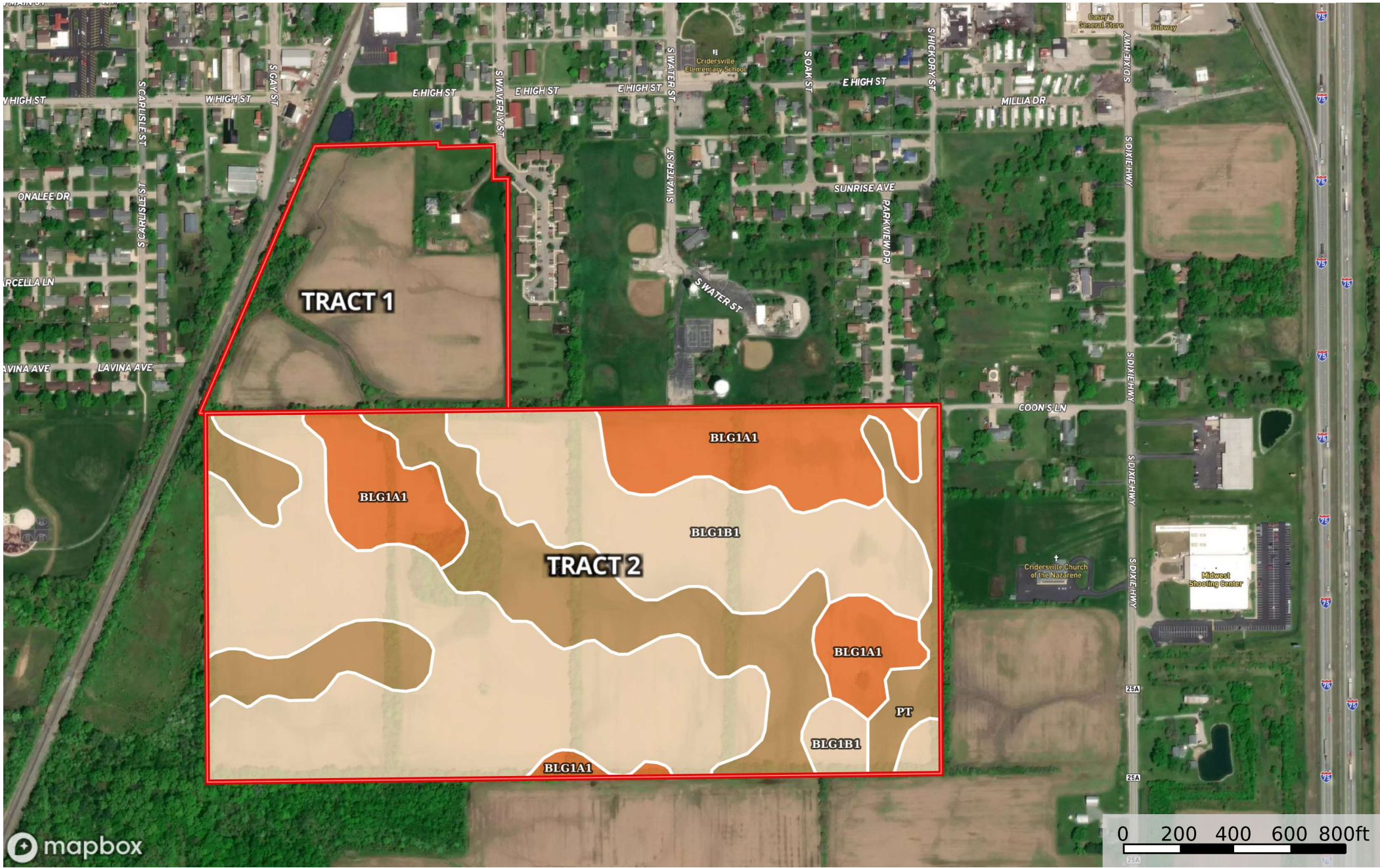
Grazing Cultivation

(c) climatic limitations (e) susceptibility to erosion

(s) soil limitations within the rooting zone (w) excess of water

97.96 Acres Auglaize County (Dunlap)

Auglaize County, Ohio, 97.96 AC +/-



mapbox

Boundary

Boundary 80.88 ac

SOIL CODE	SOIL DESCRIPTION	ACRES	%	CPI	NCCPI	CAP
Blg1B1	Blount silt loam, ground moraine, 2 to 4 percent slopes	45.07	55.72	0	67	2e
Pt	Pewamo silty clay loam, 0 to 1 percent slopes	20.59	25.46	0	76	2w
Blg1A1	Blount silt loam, ground moraine, 0 to 2 percent slopes	15.22	18.82	0	69	2w
TOTALS		80.88(*)	100%	-	69.67	2.0

(*) Total acres may differ in the second decimal compared to the sum of each acreage soil. This is due to a round error because we only show the acres of each soil with two decimal.

Capability Legend

Increased Limitations and Hazards

Decreased Adaptability and Freedom of Choice Users

Land, Capability



'Wild Life'

Forestry

Limited

Moderate

Intense

Limited

Moderate

Intense

Very Intense

Grazing Cultivation

(c) climatic limitations (e) susceptibility to erosion

(s) soil limitations within the rooting zone (w) excess of water