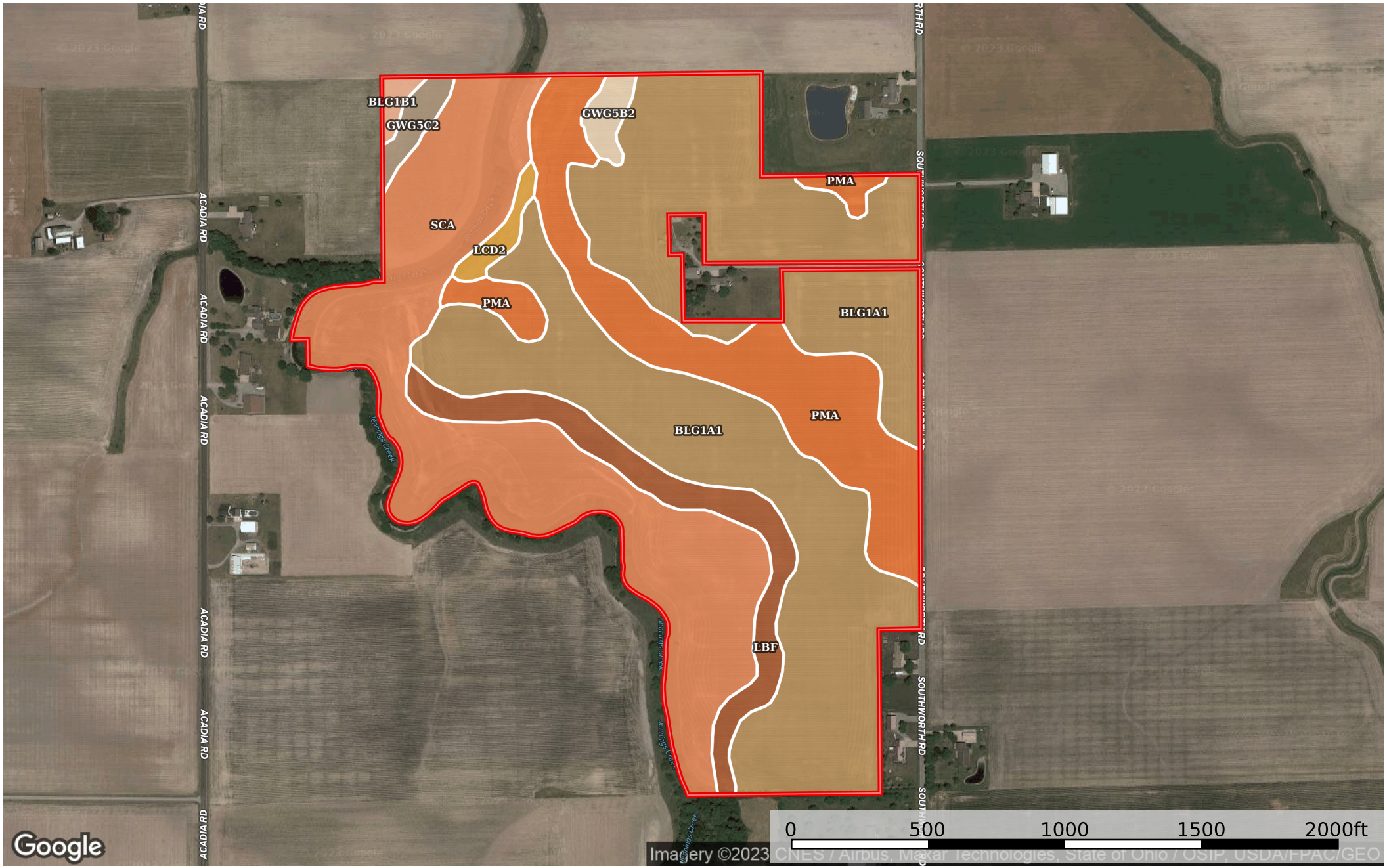


# 90+/- Acres Allen County DJ Acres

Allen County, Ohio, 90 AC +/-



→ Direction    □ Boundary

Boundary 87.57 ac

SOIL CODE	SOIL DESCRIPTION	ACRES	%	CPI	NCCPI	CAP
Blg1A1	Blount silt loam, ground moraine, 0 to 2 percent slopes	40.71	46.49	0	69	2w
ScA	Saranac silty clay loam, till substratum, 0 to 1 percent slopes, frequently flooded	24.37	27.83	44	77	3w
PmA	Pewamo silty clay loam, 0 to 1 percent slopes	13.66	15.6	0	76	2w
LbF	Lybrand silt loam, 20 to 55 percent slopes	5.65	6.45	0	15	7e
Gwg5C2	Glynwood clay loam, ground moraine, 6 to 12 percent slopes, eroded	0.97	1.11	65	57	3e
Gwg5B2	Glynwood clay loam, ground moraine, 2 to 6 percent slopes, eroded	0.91	1.04	0	56	2e
LcD2	Lybrand silty clay loam, 12 to 20 percent slopes, eroded	0.83	0.95	0	58	4e
Blg1B1	Blount silt loam, ground moraine, 2 to 4 percent slopes	0.47	0.54	0	67	2e
TOTALS		87.57(*)	100%	12.97	68.46	2.63

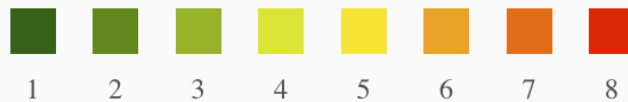
(\*) Total acres may differ in the second decimal compared to the sum of each acreage soil. This is due to a round error because we only show the acres of each soil with two decimal.

### Capability Legend

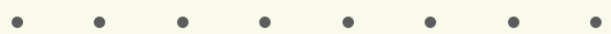
Increased Limitations and Hazards

Decreased Adaptability and Freedom of Choice Users

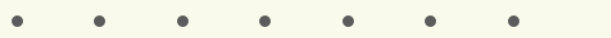
Land, Capability



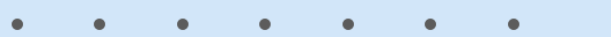
'Wild Life'



Forestry



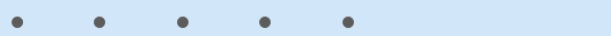
Limited



Moderate



Intense



Limited



Moderate



Intense



Very Intense



### Grazing Cultivation

(c) climatic limitations (e) susceptibility to erosion

(s) soil limitations within the rooting zone (w) excess of water