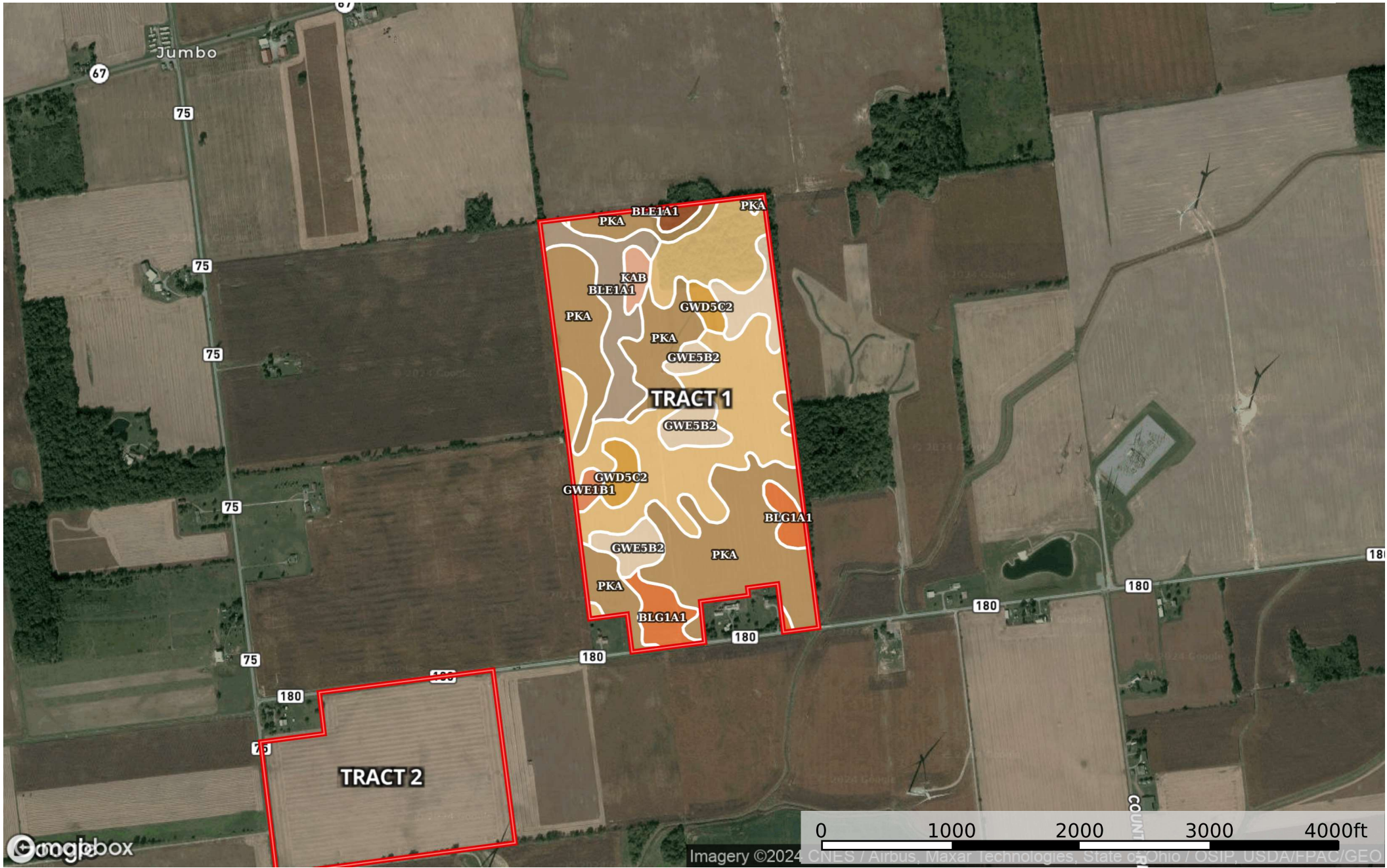


349.635 Acre Major Land Auction Hardin County Ohio

Hardin County, Ohio, 349.908 AC +/-



0 1000 2000 3000 4000ft

Imagery ©2024 CNES / Airbus, Maxar Technologies, State of Ohio / OSIP, USDA/FPAC/GeoEye



Boundary

Boundary 128.48 ac

SOIL CODE	SOIL DESCRIPTION	ACRES	%	CPI	NCCPI	CAP
PkA	Pewamo silty clay loam, 0 to 1 percent slopes	49.52	38.54	0	76	2w
Ble1B1	Blount silt loam, end moraine, 2 to 4 percent slopes	41.61	32.39	0	67	2e
Gwe5B2	Glynwood clay loam, end moraine, 2 to 6 percent slopes, eroded	12.54	9.76	0	56	2e
Ble1A1	Blount silt loam, end moraine, 0 to 2 percent slopes	9.84	7.66	0	69	2w
Blg1A1	Blount silt loam, ground moraine, 0 to 2 percent slopes	6.68	5.2	0	69	2w
Gwd5C2	Glynwood clay loam, 6 to 12 percent slopes, eroded	4.21	3.28	63	57	4e
KaB	Kendallville silt loam, 2 to 6 percent slopes	1.85	1.44	0	73	2e
Gwe1B1	Glynwood silt loam, end moraine, 2 to 6 percent slopes	1.18	0.92	0	66	2e
Ot	Olentangy silt loam	1.05	0.82	0	78	3w
TOTALS		128.48(*)	100%	2.06	69.49	2.07

(*) Total acres may differ in the second decimal compared to the sum of each acreage soil. This is due to a round error because we only show the acres of each soil with two decimal.

Capability Legend

Increased Limitations and Hazards
 Decreased Adaptability and Freedom of Choice Users

Land, Capability

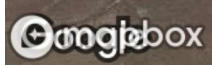
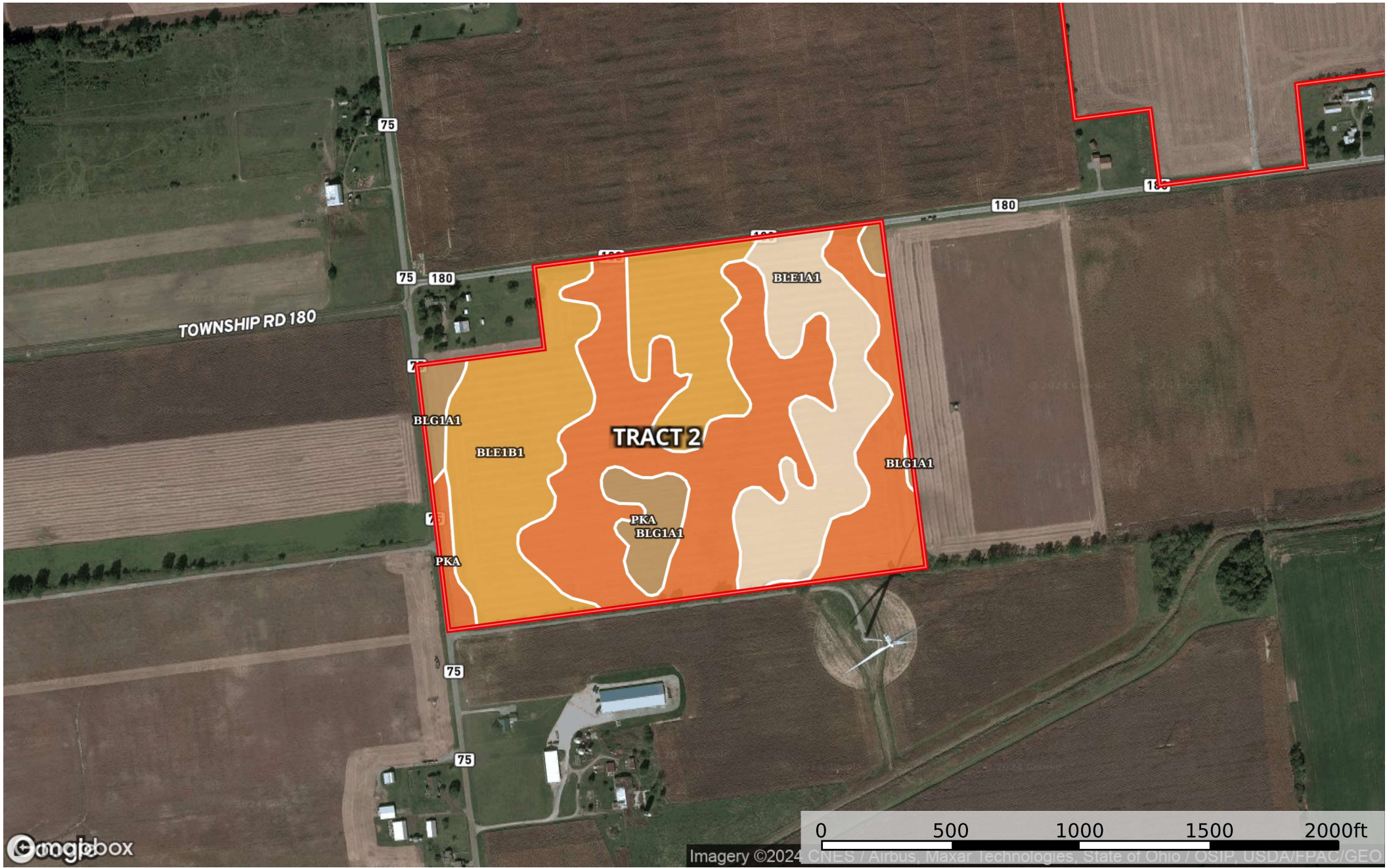
	1	2	3	4	5	6	7	8
'Wild Life'	•	•	•	•	•	•	•	•
Forestry	•	•	•	•	•	•	•	•
Limited	•	•	•	•	•	•	•	•
Moderate	•	•	•	•	•	•	•	•
Intense	•	•	•	•	•	•	•	•
Limited	•	•	•	•	•	•	•	•
Moderate	•	•	•	•	•	•	•	•
Intense	•	•	•	•	•	•	•	•
Very Intense	•	•	•	•	•	•	•	•

Grazing Cultivation

(c) climatic limitations (e) susceptibility to erosion
 (s) soil limitations within the rooting zone (w) excess of water

349.635 Acre Major Land Auction Hardin County Ohio

Hardin County, Ohio, 349.908 AC +/-

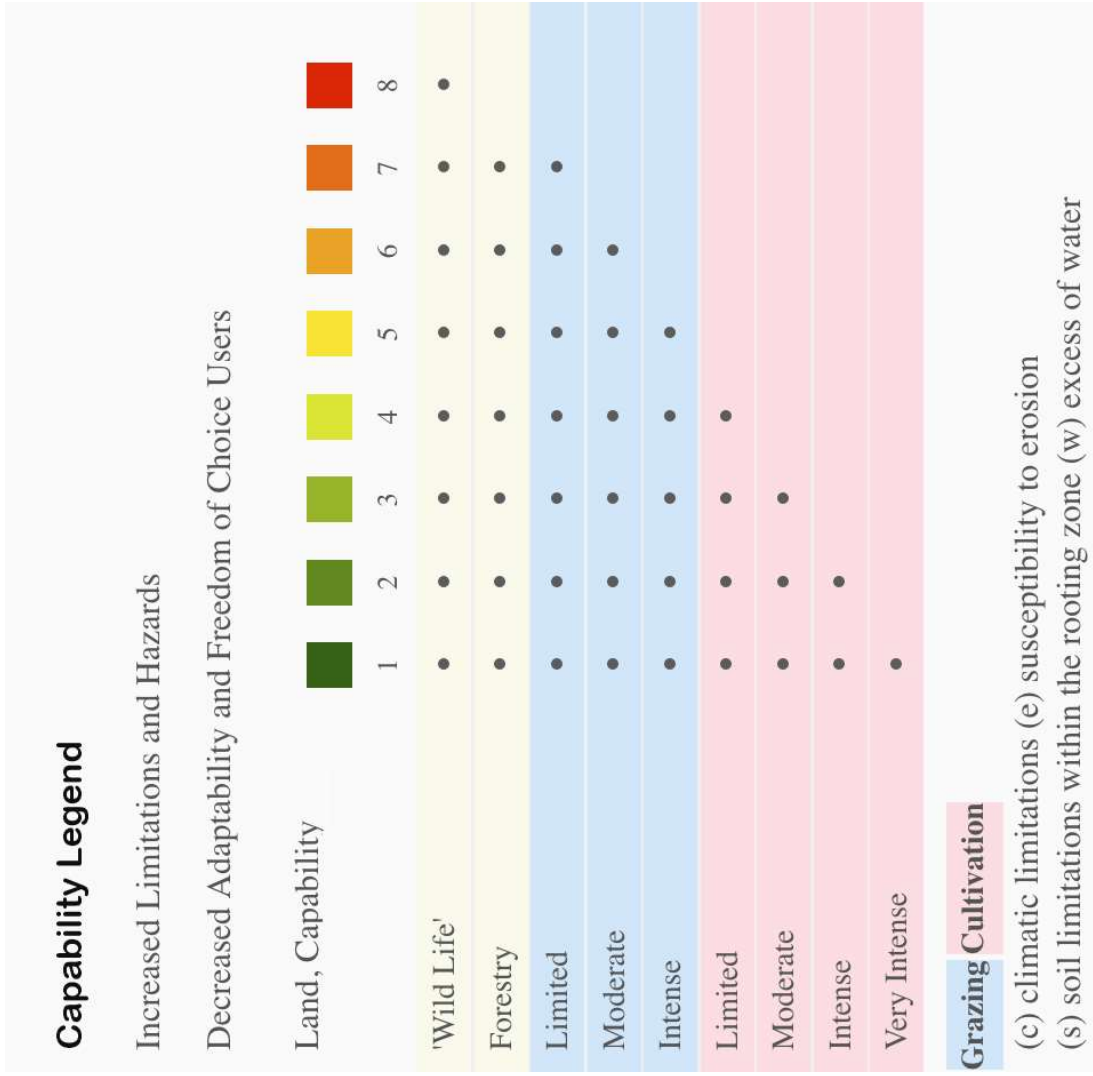


Boundary

Boundary 53.88 ac

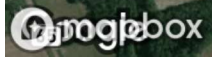
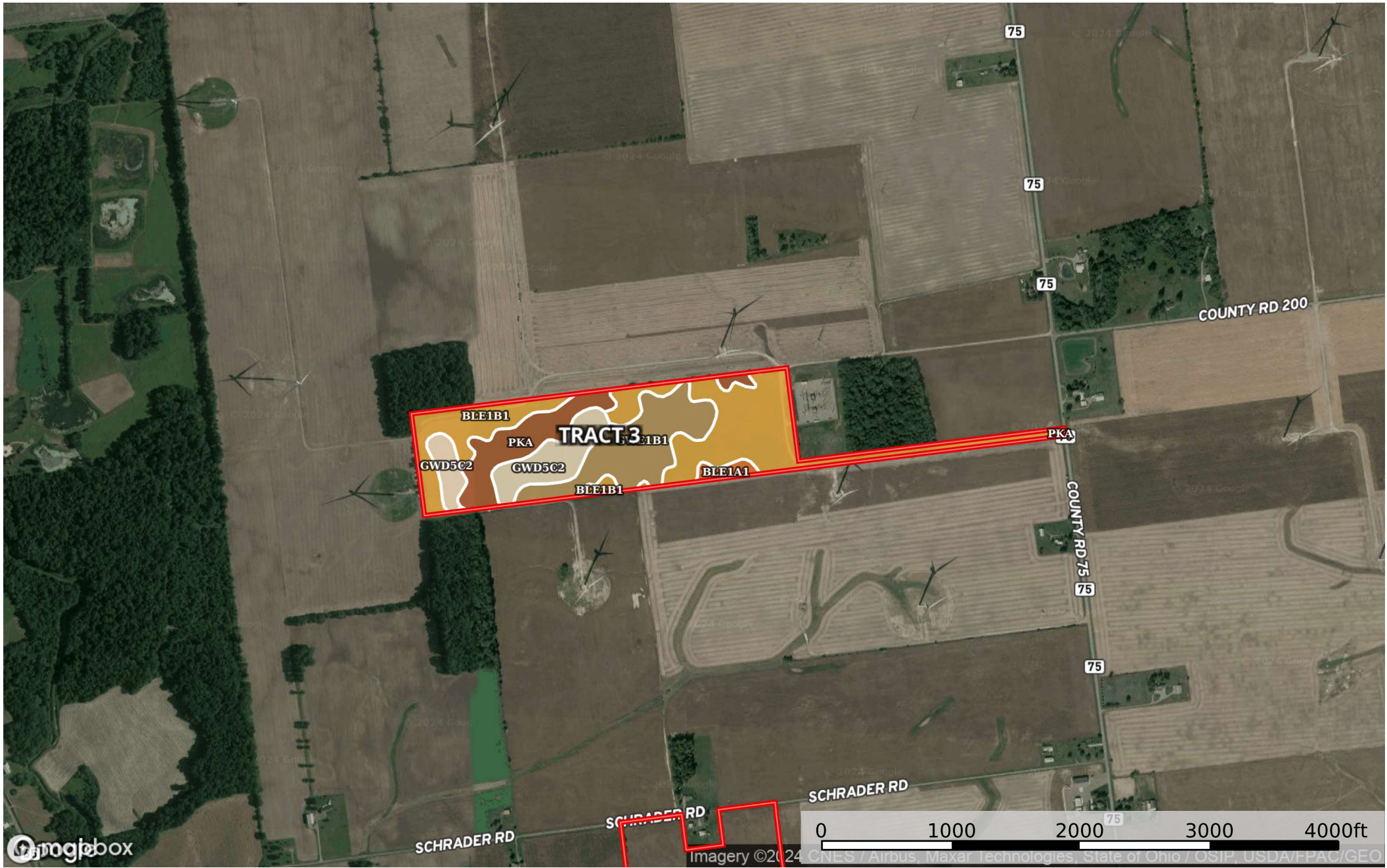
SOIL CODE	SOIL DESCRIPTION	ACRES	%	CPI	NCCPI	CAP
PkA	Pewamo silty clay loam, 0 to 1 percent slopes	23.77	44.11	0	76	2w
Ble1B1	Blount silt loam, end moraine, 2 to 4 percent slopes	16.97	31.49	0	67	2e
Ble1A1	Blount silt loam, end moraine, 0 to 2 percent slopes	9.34	17.33	0	69	2w
Blg1A1	Blount silt loam, ground moraine, 0 to 2 percent slopes	3.8	7.05	0	69	2w
TOTALS		53.88(*)	100%	-	71.44	2.0

(*) Total acres may differ in the second decimal compared to the sum of each acreage soil. This is due to a round error because we only show the acres of each soil with two decimal.



349.635 Acre Major Land Auction Hardin County Ohio

Hardin County, Ohio, 349.908 AC +/-



Imagery ©2024 CNES / Airbus, Maxar Technologies, State of Ohio / OSIP, USDA/FPAC/GEO

Boundary

Boundary 55.91 ac

SOIL CODE	SOIL DESCRIPTION	ACRES	%	CPI	NCCPI	CAP
Ble1B1	Blount silt loam, end moraine, 2 to 4 percent slopes	25.9	46.31	0	67	2e
Gwe1B1	Glywood silt loam, end moraine, 2 to 6 percent slopes	12.1	21.63	0	66	2e
Gwd5C2	Glywood clay loam, 6 to 12 percent slopes, eroded	8.42	15.05	63	57	4e
PkA	Pewamo silty clay loam, 0 to 1 percent slopes	8.32	14.88	0	76	2w
Ble1A1	Blount silt loam, end moraine, 0 to 2 percent slopes	1.17	2.09	0	69	2w
TOTALS		55.91(*)	100%	9.48	66.63	2.3

(*) Total acres may differ in the second decimal compared to the sum of each acreage soil. This is due to a round error because we only show the acres of each soil with two decimal.

Capability Legend

Increased Limitations and Hazards

Decreased Adaptability and Freedom of Choice Users

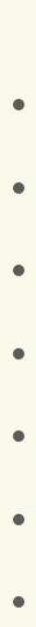
Land, Capability



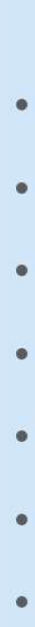
'Wild Life'



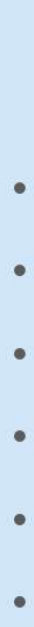
Forestry



Limited



Moderate



Intense



Limited



Moderate



Intense



Very Intense



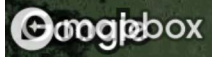
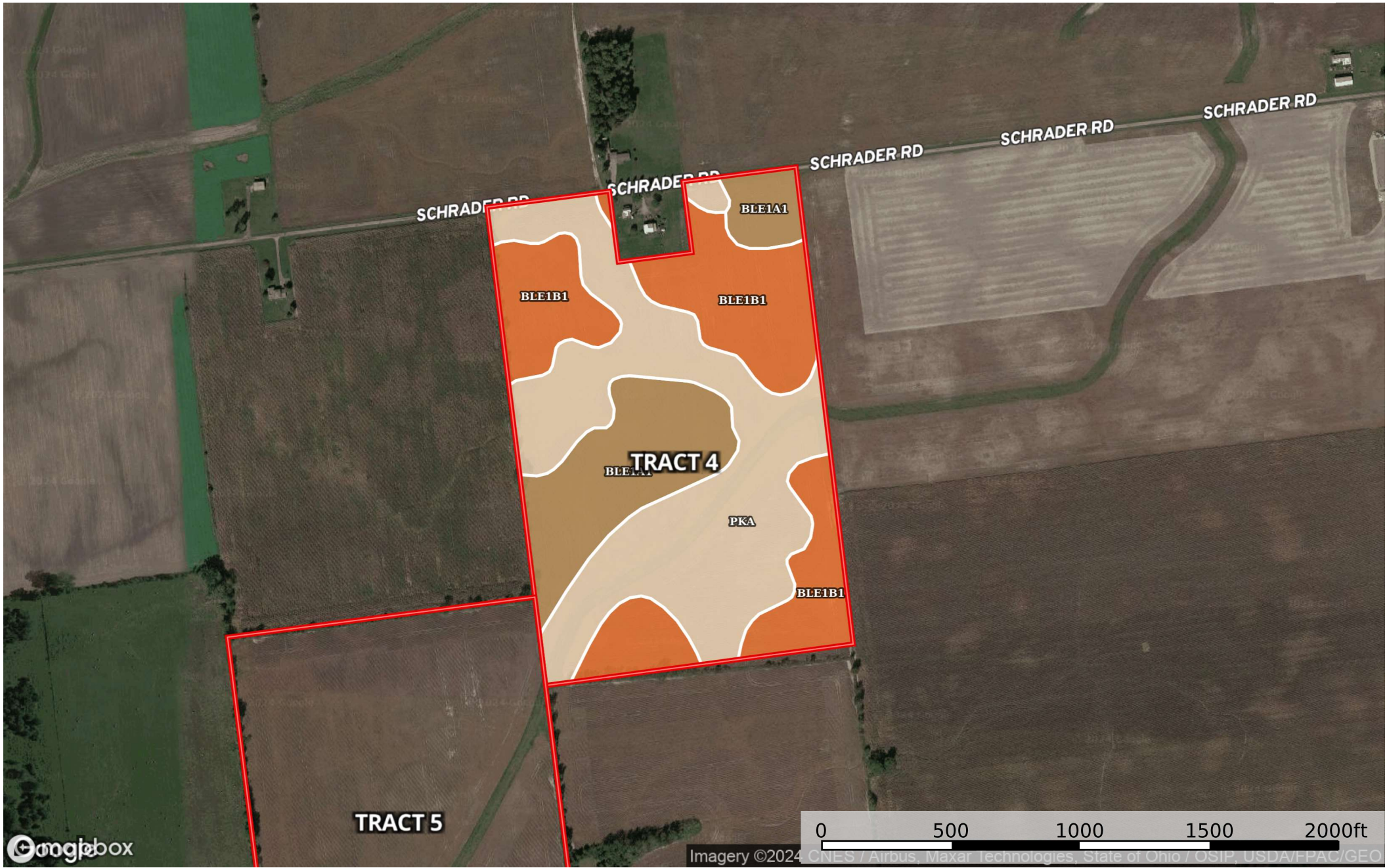
Grazing Cultivation

(c) climatic limitations (e) susceptibility to erosion

(s) soil limitations within the rooting zone (w) excess of water

349.635 Acre Major Land Auction Hardin County Ohio

Hardin County, Ohio, 349.908 AC +/-



Boundary

Boundary 49.61 ac

SOIL CODE	SOIL DESCRIPTION	ACRES	%	CPI	NCCPI	CAP
PkA	Pewamo silty clay loam, 0 to 1 percent slopes	22.37	45.09	0	76	2w
Ble1B1	Blount silt loam, end moraine, 2 to 4 percent slopes	16.8	33.86	0	67	2e
Ble1A1	Blount silt loam, end moraine, 0 to 2 percent slopes	10.44	21.04	0	69	2w
TOTALS		49.61(*)	100%	-	71.48	2.0

(*) Total acres may differ in the second decimal compared to the sum of each acreage soil. This is due to a round error because we only show the acres of each soil with two decimal.

Capability Legend

Increased Limitations and Hazards

Decreased Adaptability and Freedom of Choice Users

Land, Capability

	1	2	3	4	5	6	7	8
'Wild Life'	•	•	•	•	•	•	•	•
Forestry	•	•	•	•	•	•	•	•
Limited	•	•	•	•	•	•	•	•
Moderate	•	•	•	•	•	•	•	•
Intense	•	•	•	•	•	•	•	•
Limited	•	•	•	•	•	•	•	•
Moderate	•	•	•	•	•	•	•	•
Intense	•	•	•	•	•	•	•	•
Very Intense	•	•	•	•	•	•	•	•

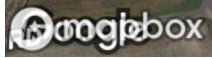
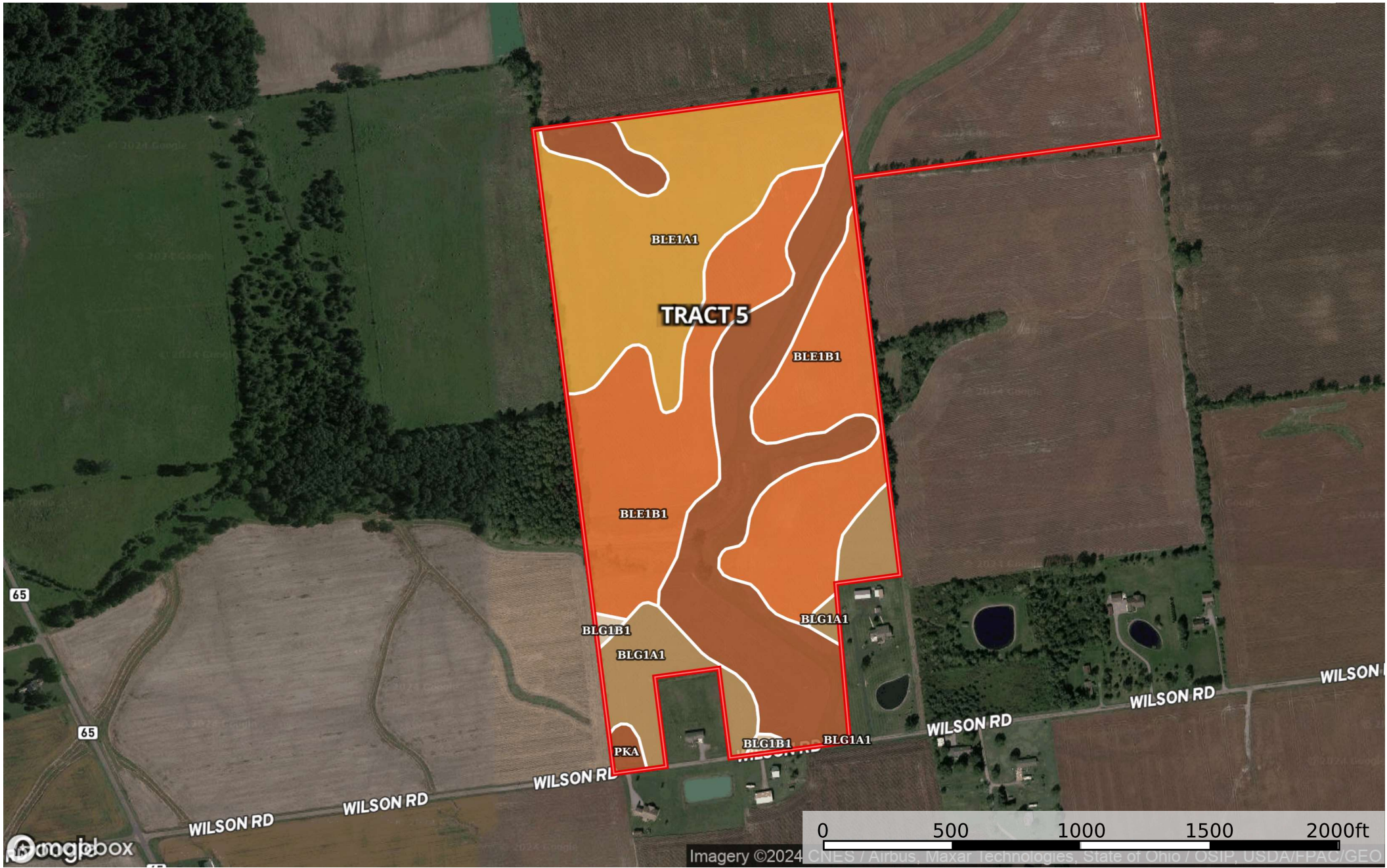
Grazing Cultivation

(c) climatic limitations (e) susceptibility to erosion

(s) soil limitations within the rooting zone (w) excess of water

349.635 Acre Major Land Auction Hardin County Ohio

Hardin County, Ohio, 349.908 AC +/-



Imagery ©2024 CNES / Airbus, Maxar Technologies, State of Ohio / OSIP, USDA/FPAC/GEO



Boundary

Boundary 63.2 ac

SOIL CODE	SOIL DESCRIPTION	ACRES	%	CPI	NCCPI	CAP
Ble1B1	Blount silt loam, end moraine, 2 to 4 percent slopes	23.78	37.63	0	67	2e
PkA	Pewamo silty clay loam, 0 to 1 percent slopes	16.76	26.52	0	76	2w
Ble1A1	Blount silt loam, end moraine, 0 to 2 percent slopes	16.58	26.23	0	69	2w
Blg1A1	Blount silt loam, ground moraine, 0 to 2 percent slopes	5.66	8.96	0	69	2w
Blg1B1	Blount silt loam, ground moraine, 2 to 4 percent slopes	0.42	0.66	0	67	2e
TOTALS		63.2(*)	100%	-	70.09	2.0

(*) Total acres may differ in the second decimal compared to the sum of each acreage soil. This is due to a round error because we only show the acres of each soil with two decimal.

Capability Legend

Increased Limitations and Hazards

Decreased Adaptability and Freedom of Choice Users

Land, Capability



'Wild Life'

Forestry

Limited

Moderate

Intense

Limited

Moderate

Intense

Very Intense

Grazing Cultivation

(c) climatic limitations (e) susceptibility to erosion

(s) soil limitations within the rooting zone (w) excess of water