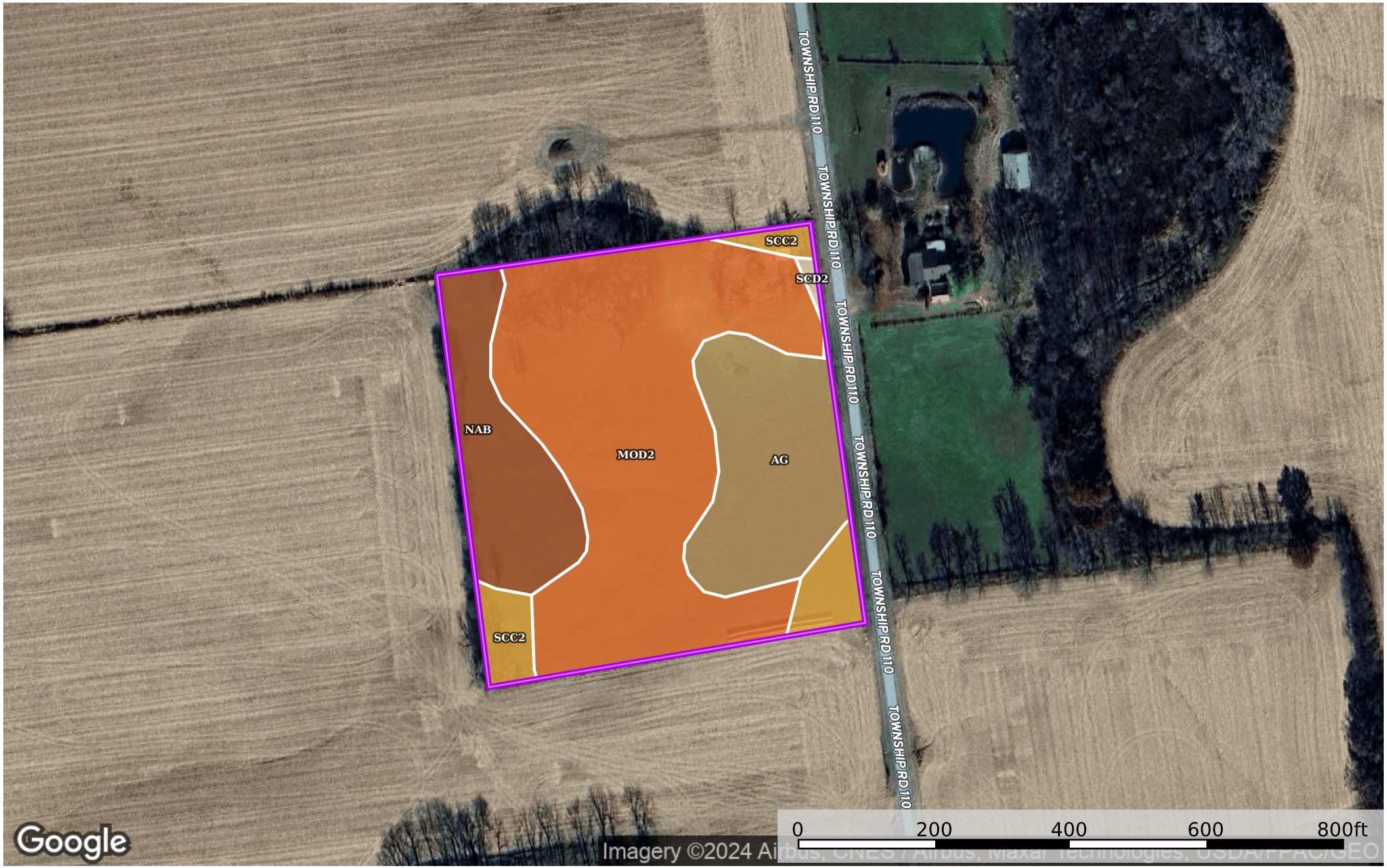



Kennedy 7.8 acre lot listing

Logan County, Ohio, 7.8 AC +/-



Google

Imagery ©2024 Airbus, CNES, Airbus, Maxar Technologies, USDA/FRC/GeoEye

 Boundary

Boundary 7.65 ac

SOIL CODE	SOIL DESCRIPTION	ACRES	%	CPI	NCCPI	CAP
MoD2	Milton silt loam, 12 to 18 percent slopes, moderately eroded	4.23	55.22	0	60	4e
Ag	Algiers silt loam	1.58	20.63	0	72	2w
NaB	Nappanee silt loam, 2 to 6 percent slopes	1.21	15.8	0	58	3e
ScC2	St. Clair silt loam, 6 to 12 percent slopes, moderately eroded	0.59	7.7	0	49	3e
ScD2	St. Clair silt loam, 12 to 18 percent slopes, moderately eroded	0.04	0.52	0	44	4e
TOTALS		7.65(*)	100%	-	61.15	3.35

(*) Total acres may differ in the second decimal compared to the sum of each acreage soil. This is due to a round error because we only show the acres of each soil with two decimal.

Capability Legend

Increased Limitations and Hazards

Decreased Adaptability and Freedom of Choice Users

Land, Capability

	1	2	3	4	5	6	7	8
'Wild Life'	•	•	•	•	•	•	•	•
Forestry	•	•	•	•	•	•	•	
Limited	•	•	•	•	•	•	•	
Moderate	•	•	•	•	•	•		
Intense	•	•	•	•	•			
Limited	•	•	•	•				
Moderate	•	•	•					
Intense	•	•						
Very Intense	•							

Grazing Cultivation

(c) climatic limitations (e) susceptibility to erosion

(s) soil limitations within the rooting zone (w) excess of water