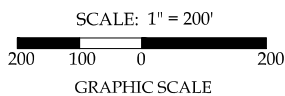
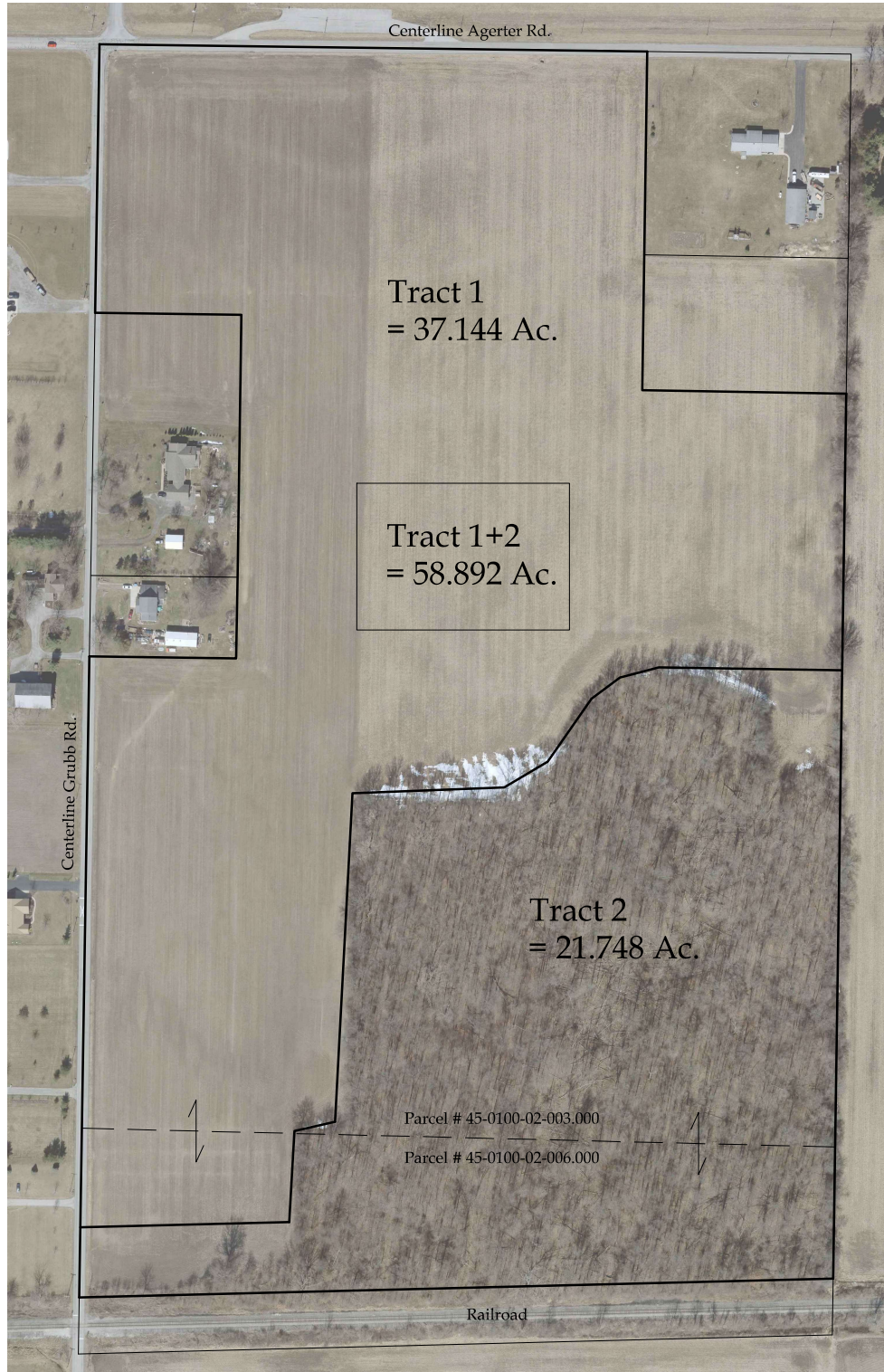


**PROPOSED**  
**Acreage Per Survey**

**Visual Aid for Auction**



This plat represents acreage based upon actual field measurements taken in September, 2024.

*Brad J. Core*  
Brad J. Core, P.S. #8004

**CORE CONSULTING**  
A Division of Materials Testing, Inc.

201 N. Broadway St.  
Spencerville, OH 45887  
Phone/ Fax: 419-647-6163

CLIENT: **Dye Real Estate & Land Company**

SURVEYED BY: <b>B.J.M</b>	DATE: <b>10-14-2024</b>	DRAWN BY: <b>E.H.C.</b>	CHECKED BY: <b>B.J.C.</b>
SCALE: <b>1" = 200'</b>	PAGE: <b>1</b>	OF PAGES: <b>1</b>	PAGES: <b>1</b>