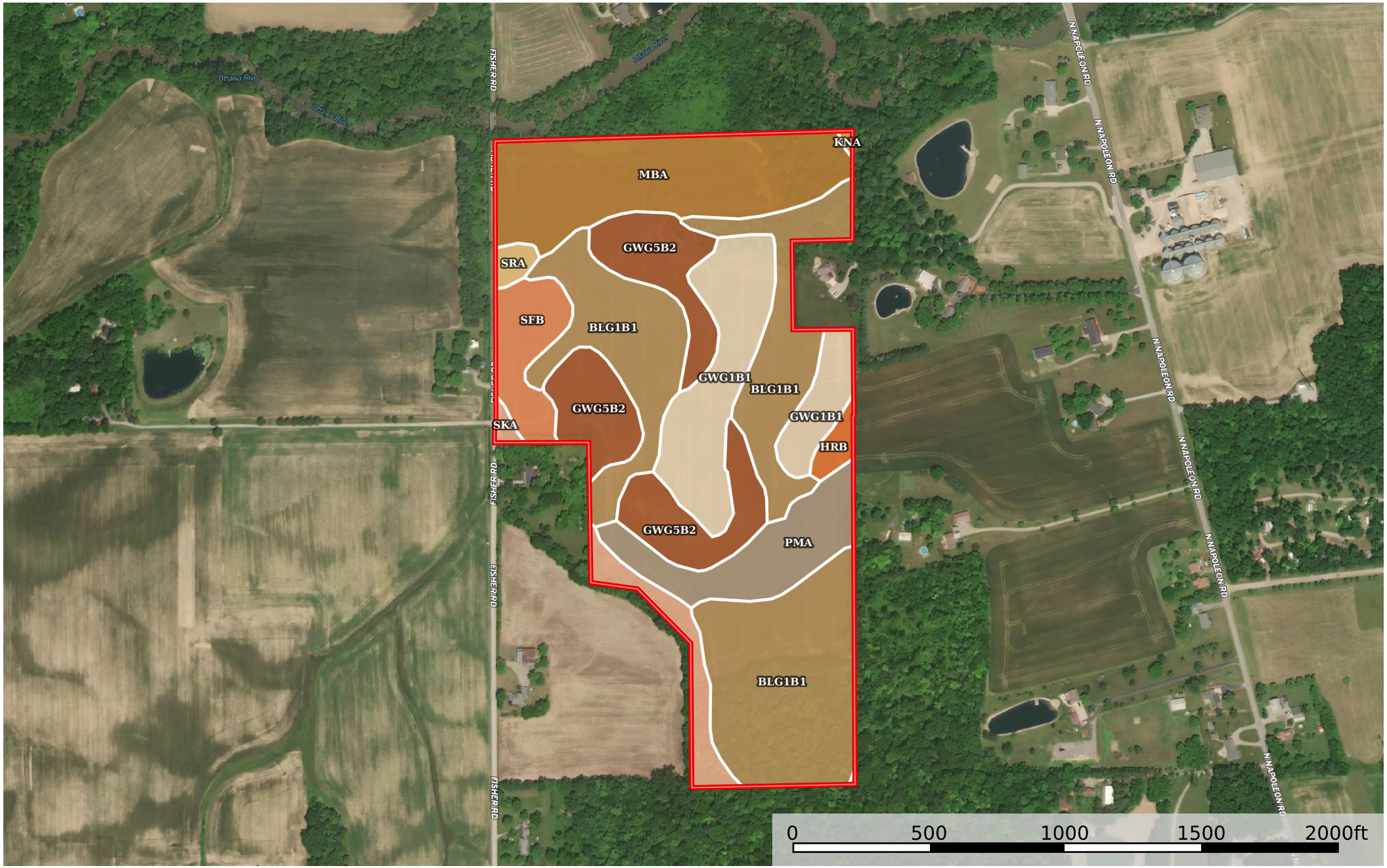


54 Acres Allen Co. Fisher Road

Allen County, Ohio, 54 AC +/-



Boundary

|  Boundary 54.28 ac

SOIL CODE	SOIL DESCRIPTION	ACRES	%	CPI	NCCPI	CAP
Blg1B1	Blount silt loam, ground moraine, 2 to 4 percent slopes	19.52	35.97	0	67	2e
MbA	Medway silt loam, 0 to 2 percent slopes, occasionally flooded	9.12	16.8	74	86	2w
Gwg5B2	Glynwood clay loam, ground moraine, 2 to 6 percent slopes, eroded	8.35	15.39	0	56	2e
Gwg1B1	Glynwood silt loam, ground moraine, 2 to 6 percent slopes	7.13	13.14	0	67	2e
PmA	Pewamo silty clay loam, 0 to 1 percent slopes	4.22	7.78	0	76	2w
SfB	Shawtown loam, 2 to 6 percent slopes	2.63	4.85	66	74	2e
SkA	Shoals silt loam, till substratum, 0 to 1 percent slopes, occasionally flooded	2.2	4.05	69	79	2w
HrB	Houcktown loam, 2 to 6 percent slopes	0.59	1.09	71	69	2e
SrA	Sloan silty clay loam, till substratum, 0 to 1 percent slopes, frequently flooded	0.45	0.83	62	56	3w
KnA	Knoxdale silt loam, 0 to 2 percent slopes, occasionally flooded	0.07	0.13	67	85	2w
TOTALS		54.28(*)	100%	19.8	69.99	2.01









(*) Total acres may differ in the second decimal compared to the sum of each acreage soil. This is due to a round error because we only show the acres of each soil with two decimal.

Capability Legend

Increased Limitations and Hazards

Decreased Adaptability and Freedom of Choice Users

Land, Capability

								
	1	2	3	4	5	6	7	8
'Wild Life'	•	•	•	•	•	•	•	•
Forestry	•	•	•	•	•	•	•	
Limited	•	•	•	•	•	•	•	
Moderate	•	•	•	•	•	•		
Intense	•	•	•	•	•			
Limited	•	•	•	•				
Moderate	•	•	•					
Intense	•	•						
Very Intense	•							

Grazing Cultivation

(c) climatic limitations (e) susceptibility to erosion

(s) soil limitations within the rooting zone (w) excess of water