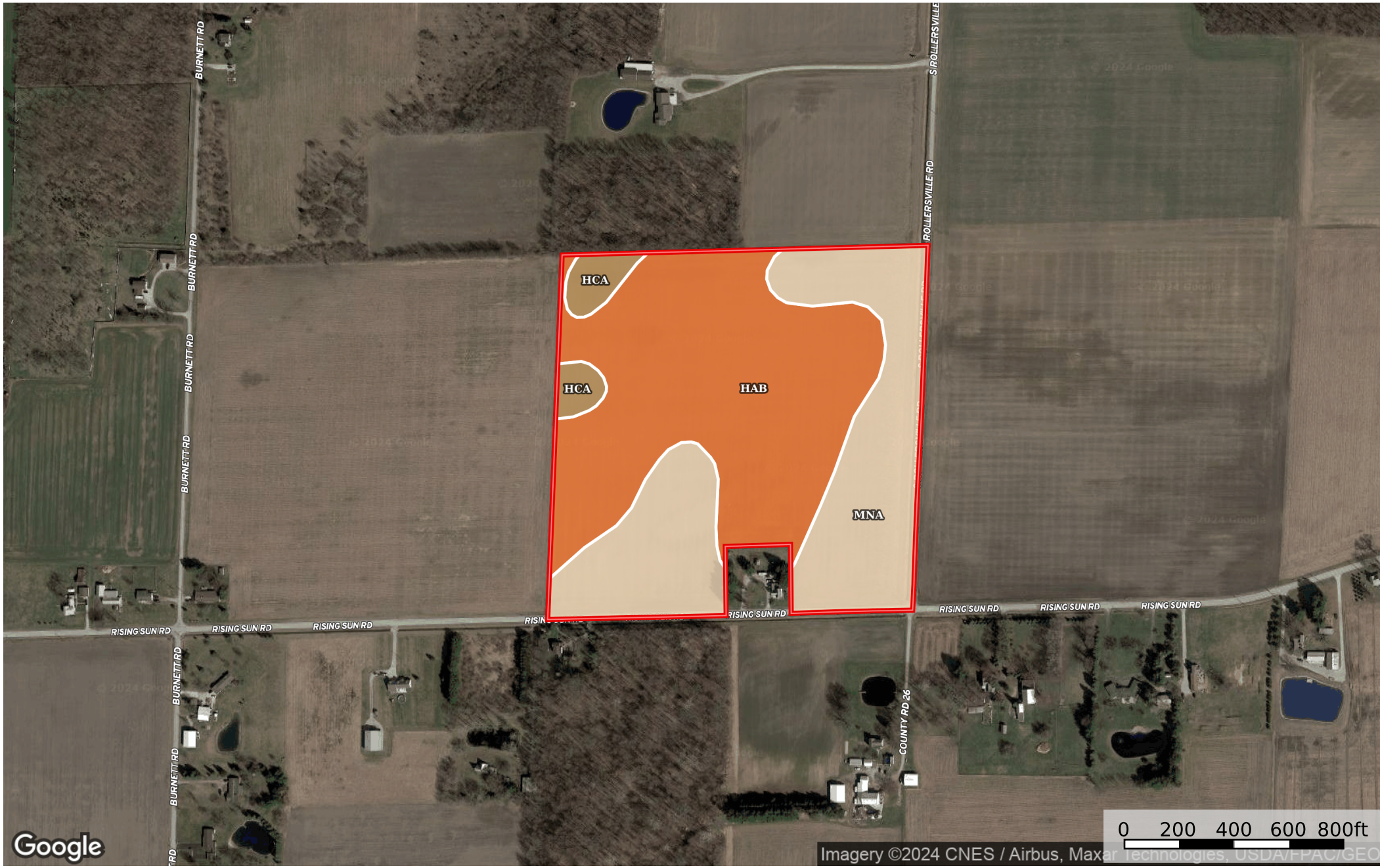


# 38.63 Acres Sandusky County - Kline

Sandusky County, Ohio, 38.63 AC +/-



Imagery ©2024 CNES / Airbus, Maxar Technologies, USDA/FPA/C/Geo



Boundary

Boundary 39.15 ac

SOIL CODE	SOIL DESCRIPTION	ACRES	%	CPI	NCCPI	CAP
HaB	Haskins sandy loam, 1 to 4 percent slopes	21.24	54.27	0	77	2e
MnA	Mermill loam, 0 to 1 percent slopes	16.26	41.54	78	69	2w
HcA	Hoytville silty clay loam, 0 to 1 percent slopes	1.65	4.22	82	67	2w
TOTALS		39.15(*)	100%	35.86	73.27	2.0

(\*) Total acres may differ in the second decimal compared to the sum of each acreage soil. This is due to a round error because we only show the acres of each soil with two decimal.

