

EQUIPMENT



**REAL ESTATE
& LAND COMPANY**

2045 HEATHER DR.
LIMA, OH 45804



EQUIPMENT AUCTION SALE



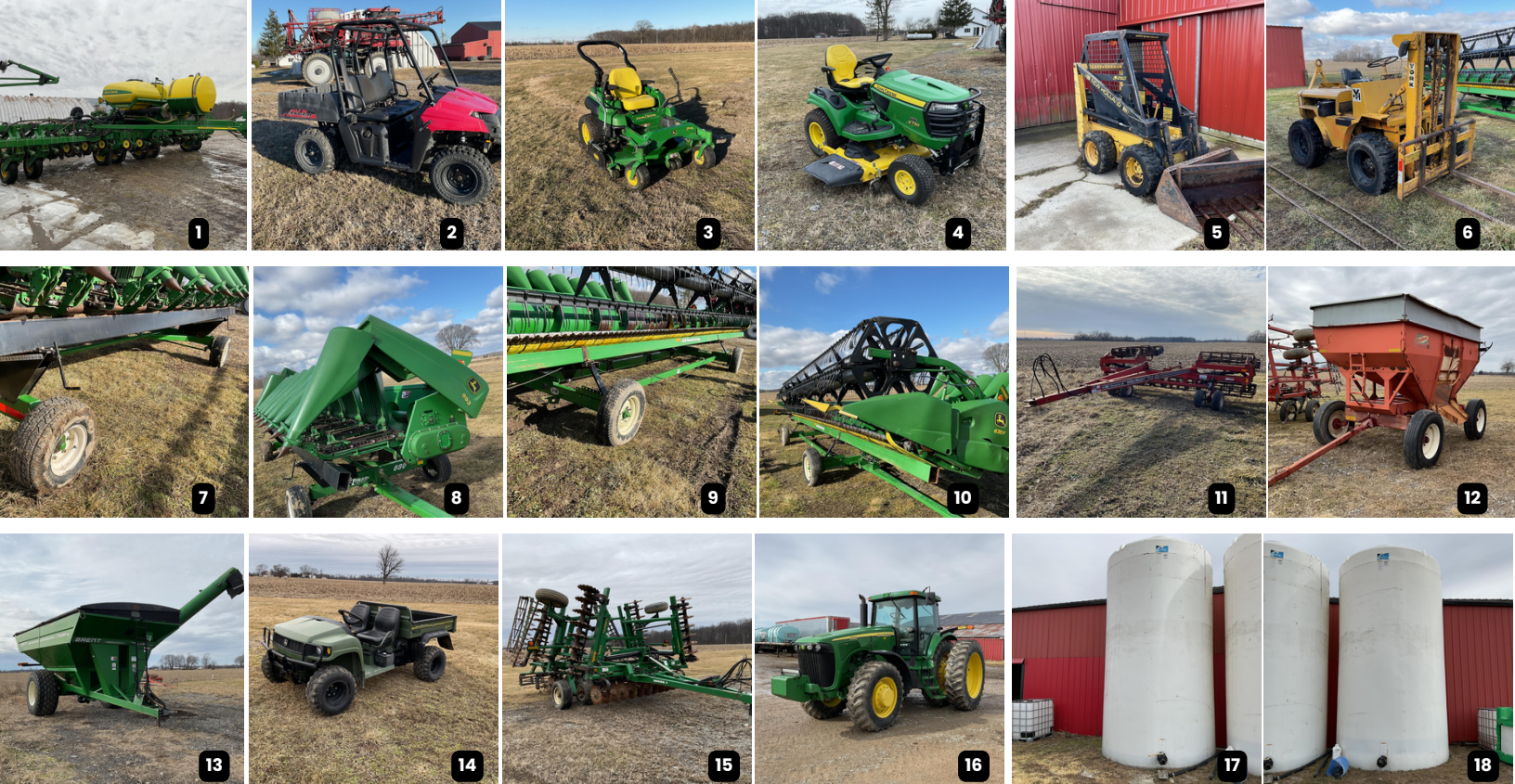
Contact:

Office | 419-516-4106
Austin Heffner | 567-712-1352
Matt Bowers | 567-204-7462
Devin Dye | 419-303-5891

 **AUCTION TIME**
10:00 am - Non-Online Items
12:00 pm - All Online Items & Equipment

 **AUCTION DATE**
March 29, 2025

 **AUCTION LOCATION**
7179 Donovan Rd., Ostrander, OH



ITEM NUMBER	TITLE	EQUIPMENT DESCRIPTIONS
1	<u>2009 JOHN DEERE 1790</u>	2009 JOHN DEERE 1790 NO-TILL PLANTER IN GREAT SHAPE. SPLIT 16/32 ROW, 22,927 ACRES, 420 GALLON LIQUID FERTILIZER TANK, REAR LOAD, REAR HITCH, JOHN BLUE PUMP, CCS SEED DELIVERY, 2 POINT QUICK HITCH, VACUUM SYSTEM, PNEUMATIC DOWN FORCE, ROW MARKERS.
2	<u>2013 POLARIS RANGER 500 EFI</u>	2013 POLARIS 500EFI RANGER IN GOOD SHAPE, 498cc/34HP, GAS, 4x4, 867 HOURS, 4,106 MILES, MANUAL DUMP BED WITH TAILGATE, HEAD AND TAIL LIGHTS
3	<u>2011 JOHN DEERE Z960A</u>	2011 JOHN DEERE ZTRACK PRO Z960A MOWER, 1137 HOURS, 999CM/34HP KAWASAKI, GAS, ROPS, HYDRAULIC LOWER AND LIFT DECK, 60IN DECK, QWIKCHUTE DISCHARGE CHUTE BLOCKER.
4	<u>2019 JOHN DEERE X730</u>	2019 JOHN DEERE X730 GARDEN TRACTOR/MOWER IN GREAT SHAPE, ONLY 243 HOURS, 745CM/24HP KAWASAKI, RADIATOR COLD, 60IN DECK, POWER STEERING, DIF LOCK, HYDRAULIC LIFT AND LOWER DECK, AUXILIARY HYDRAULIC HOOK UP, 12V OUTLET, HEAD AND TAILLIGHTS, CRUISE CONTROL, LUXURY SEAT
5	<u>NEW HOLLAND L250</u>	NEW HOLLAND L250 SKID STEER, 1,087 HOURS, GAS HONDA 23HP, 575 LBS LOAD LIMIT, 41IN BUCKET AND MANURE FORKS
6	<u>YORK UT40</u>	YORK TOWABILITY FORKLIFT, GAS, 4 SPEED FORWARD AND REVERSE, 8FT HOIST HEIGHT LIMIT, 4,000LBS LIMIT, N/A HOURS, KNOCKS WHEN DRIVING ONLY BUT EVERYTHING WORKS AS IT SHOULD
7	<u>E-Z TRAIL 680</u>	E-Z TRAIL 680, IN GOOD SHAPE, 21 FT, ADJUSTABLE HEADER BRACKETS, ADJUSTABLE TONGUE, 20.5 X 8.0-10ply TIRES
8	<u>2007 JOHN DEERE 893</u>	JOHN DEERE 893 CORN HEAD, IN GREAT SHAPE, QUICK COUPLER HYDRAULIC HOOKUP, KNIFE ROLLERS, HEADER HEIGHT CONTROL, POLY SNOOTS
9	<u>J&M HT974</u>	J&M HT974 HEADER CART, IN GOOD SHAPE, 35 FT, LIGHTS, ADJUSTABLE HEADER BRACKETS, ADJUSTABLE TONGUE
10	<u>2008 JOHN DEERE 635F</u>	JOHN DEERE 635F HEADER HYDRAFLEX. 35 FT, FULL FINGER AUGER, PICKUP REEL, ROCK GUARD, QUICK COUPLER HYDRAULIC HOOKUP, POLY SKID PLATES, HEADER HEIGHT CONTROL
11	<u>BRADFORD 335</u>	BRADFORD 335 WAGON. 12 TON PEQUEA RUNNING GEAR, 300 BUSHEL, 11R 22.5 TIRES
12	<u>UNVERFERTH ROLLING HARROW II</u>	UNVERFERTH ROLLING HARROW II, 25 FT, ADJUSTABLE HITCH, 20.5 X 8.0-10ply TIRES
13	<u>BRENT 880</u>	BRENT 880 GRAIN CART. 880 BUSHEL, 20 IN AUGERS, 16 FT FOLDING AUGER, 2 CAMERAS (ONE IN BACK AND ONE FOR AUGER), TARP, 1000 PTO, 30.5L-32 TIRES, HYDRAULIC AUGER SHUTOFF DOOR
14	<u>2004 JOHN DEERE GATOR HPX</u>	JOHN DEERE GATOR HPX 4X4. IN GREAT CONDITION, 991 HOURS, DIFFERENTIAL LOCK, HYDRAULIC DUMP BED, GAS, HIGH/LOW GEARS
15	<u>GREAT PLAINS 2400TT</u>	GREAT PLAINS TURBO TILL 2400 SERIES II. 25 FT, FULL WEIGHTS, REAR HITCH, ROLLING BASKETS, TANDEM MAIN FRAME, ADJUSTABLE HITCH
16	<u>2004 JOHN DEERE 8320</u>	JOHN DEERE 8320. IN GOOD CONDITION, 5,387 HOURS, 4 HYDRAULIC REMOTES + POWER BEYOND, HYDRAULIC CASE RETURN, FRONT WHEEL ASSIST, GPS READY, FIRESTONE 420/90R30 FRONT TIRES AND 480/80R46 REARS AND DUALS, 400 LBS REAR INNER WHEEL WEIGHTS, 3 POINT QUICK HITCH
17	<u>ACE ROTOMOLD 5500</u>	ACE ROTOMOLD POLY 5,500 GALLON TANK GREAT SHAPE, 2" LINE HOOKUP
18	<u>ACE ROTOMOLD 5500</u>	ACE ROTOMOLD POLY 5,500 GALLON TANK GREAT SHAPE, 2" LINE HOOKUP

19	<u>DU-MAR 6000</u>	DU-MAR 6000 MAGNUM. 6000 GALLON, REAR AXLE STEERING, HYDRAULIC LID, SIDE OR BACK APPLICATION, 30.5L-32 TIRES, BATTION PASANI POMPE SpA, 29.5 HP HYDRAULIC 2139 GAL 1500 RPM CAPACITY PUMP
20	<u>JOHN DEERE 9220</u>	JOHN DEERE 9220 IN GREAT CONDITION, 3496 HOURS, 4 HYDRAULIC REMOTES, 1,000 PTO, POWERSHIFT, 480/80R46 FIRESTONE TIRES
21	<u>2001 TRANSCRAFT</u>	TRANSCRAFT EAGLE TENDER TRAILER. 48 FT, AIR RIDE, 2-2700 GAL TANKS, CHEMICAL INDUCTOR, BRIGGS & STRATTON 208CC PUMP, 2 IN LINES, 11R 22.5 TIRES
22	<u>UNKNOWN BLADE</u>	3 POINT HITCH 8FT BLADE WITH ANGLE ADJUSTMENT
23	<u>1993 DORSEY</u>	DORSEY STAINLESS STEEL REFRIGERATED VAN TRAILER. 48 FT, AIR RIDE, SWING DOORS, ALUMINUM DUCT FLOOR, 285/75R 24.5 TIRES
24	<u>CASE IH 3900</u>	CASE IH 3900 DISK IN GOOD SHAPE. 25FT, REAR HITCH, DEPTH ADJUSTMENT, ADJUSTABLE HITCH, TANDEM MAIN FRAME
25	<u>2012 THUNDER CREEK EQUIPMENT</u>	2012 THUNDER CREEK FUEL TRAILER, 800 GALLON, 100 GALLON DEF TANK, TOOL BOX, WELDER/STORAGE BOX IN THE REAR, SIDE STORAGE BOX, 212cc PUMP, GPI FUEL METER ON NOZZLE, ELECTRIC DEF PUMP
26	<u>2008 JOHN DEERE 9670 STS</u>	2008 JOHN DEERE 9670 STS IN GREAT CONDITION, 3584 HOURS, 2477 SEPARATOR HOURS, BULLET ROTOR, GRAIN BIN EXTENSIONS, 2WD, GOODYEAR 528/85R 42 TIRES AND DUALS, GOODYEAR 28L-26 REAR TIRES, STRAW CHOPPER/SPREADER COMBO
27	<u>JOHN DEERE 750</u>	JOHN DEERE 750 NO-TILL DRILL, 20FT, 7 1/2 IN SPACING, REAR DRIVE WHEEL, PROGRESSIVE NO-TILL MARKERS, 31x13.50-15 FIRESTONE TIRES, WILL NEED SOME RUBBER SEED TUBES TO BE FIELD READY
28	<u>1990 TIMPTE</u>	1990 TIMPTE HOPPER BOTTOM, 41FT, SPRING RIDE, TARP, 11R 24.5 TIRES
29	<u>2005 CASE IH SPX3185</u>	CASE IH PATRIOT SPX3185 SPRAYER, 90FT BOOMS, 2773 HOURS, 20IN NOZZLE SPACING, 5 WAY NOZZLE BODY, 6 SECTION CONTROL, AG LEADER MONITOR, EZ-STEER GPS, HYDRAULIC AXLE ADJUSTMENT
30	<u>MILLER BOBCAT 225</u>	MILLER BOBCAT 225 WELDER/GENERATOR GREAT CONDITION, GAS KOHLER 674cc 16.3 HOURS
31	<u>MILLER</u>	MILLER MILLERMATIC 210 wire welder with spool gun
32	<u>DOUBLE B TRAILERS 18000</u>	1,000 GALLON NURSES TRAILER, GOOSE NECK, 18,000 GVW, CHEMICAL INDUCTOR, 208cc PUMP, 2 IN LINES, ST 225/75D 14.5 TIRES
33	<u>JOHN DEERE STARFIRE 3000</u>	JOHN DEERE STARFIRE 3000 RECEIVER
34	<u>JOHN DEERE GREENSTAR 3-2630</u>	JOHN DEERE 2630 MONITOR
35	<u>JOHN DEERE MX8</u>	JOHN DEERE MX8 MOWER IN GOOD SHAPE, 2 POINT QUICK HITCH, 540 PTO, 8 1/2 FT, REAR HYDRAULIC LEVELING WHEELS,
36	<u>KENT 5323 V</u>	KENT FIELD CULTIVATOR, 25FT, REAR HITCH WITH HYDRAULIC REMOTES, WALKING TANDEM, 3 BAR COIL TINE, ADJUSTABLE HITCH, 9.5L-15 TIRES



19



20



21



22



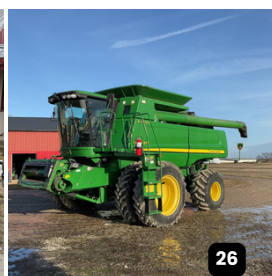
23



24



25



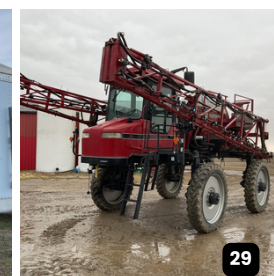
26



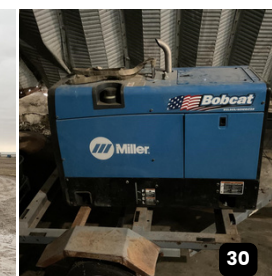
27



28



29



30



31



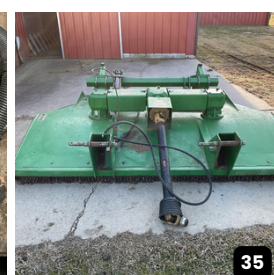
32



33



34



35



36

ITEM NUMBER	TITLE	EQUIPMENT DESCRIPTIONS
-------------	-------	------------------------

37	1980 UNKNOWN	DUMP TRAILER, 28FT, 67IN, SPRING RIDE, GRAIN DOOR, 11R 24.5 TIRES
----	---------------------	---

38	1980 ROGERS	SEMI EQUIPMENT TRAILER, 31/2 FT DOVE TAIL, 23FT FLAT DECK, 10FT TOP DECK, 8FT WIDE
----	--------------------	--

OTHER ITEMS

39	CANVAS WHEELBARROW
----	---------------------------

50	FLOOR JACK
----	-------------------

40	WELDER CART
----	--------------------

51	5' PLASTIC COATED CHICKEN WIRE
----	---------------------------------------

41	BENCH
----	--------------

52	TRANSMISSION JACK
----	--------------------------

42	CHAINSAW
----	-----------------

53	RUBBER MADE WHEELBARROW
----	--------------------------------

43	METAL SHELF
----	--------------------

54	4 WHEEL CART
----	---------------------

44	GAS CANS
----	-----------------

55	LOG CHAINS
----	-------------------

45	PROPANE HEATER
----	-----------------------

56	HEAVY DUTY SHELVING (4)
----	--------------------------------

46	GENERATOR
----	------------------

57	DRYWALL JACK
----	---------------------

47	ELECTRIC CHAIN HOIST
----	-----------------------------

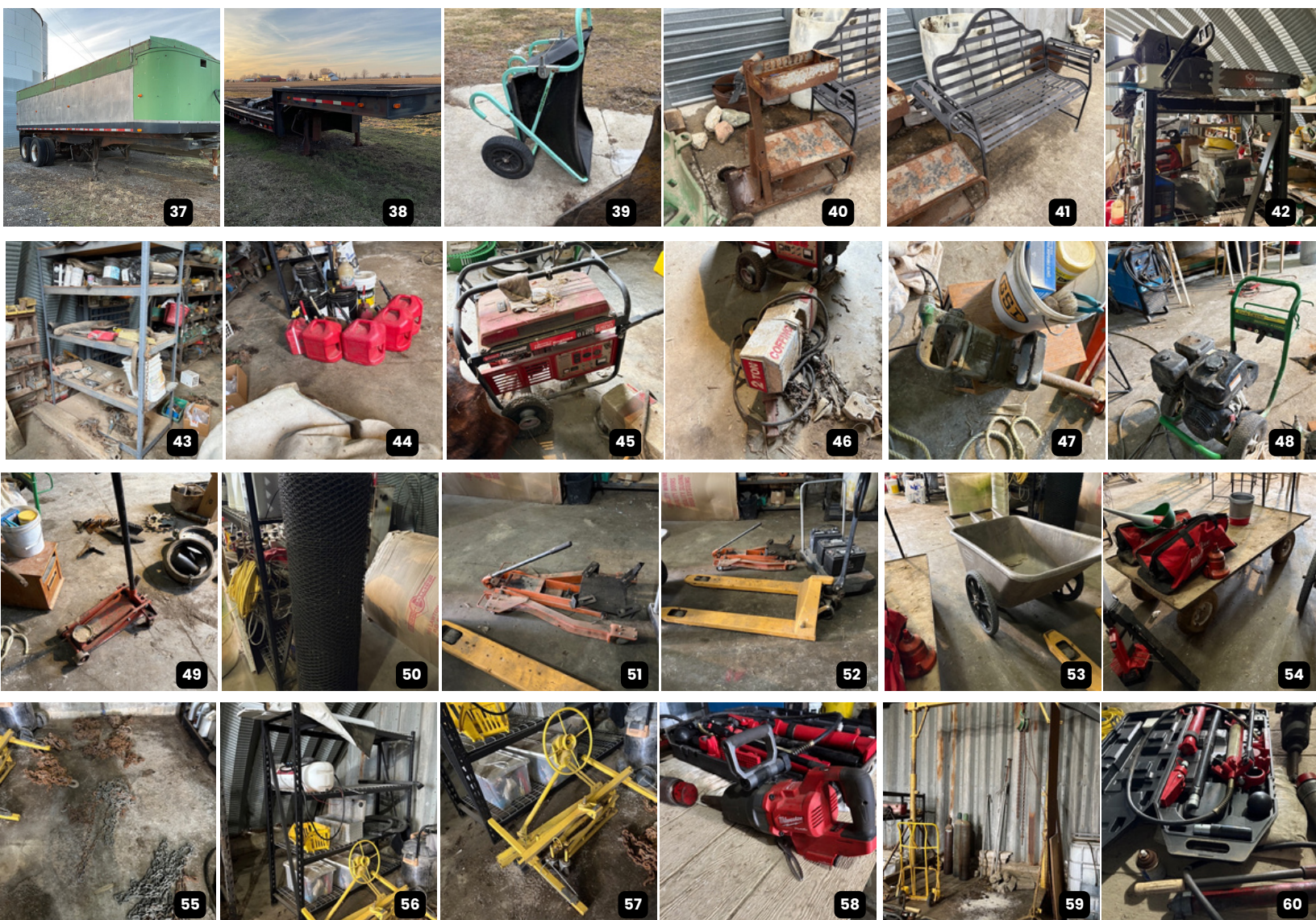
58	18 VOLT 1" IMPACT
----	--------------------------

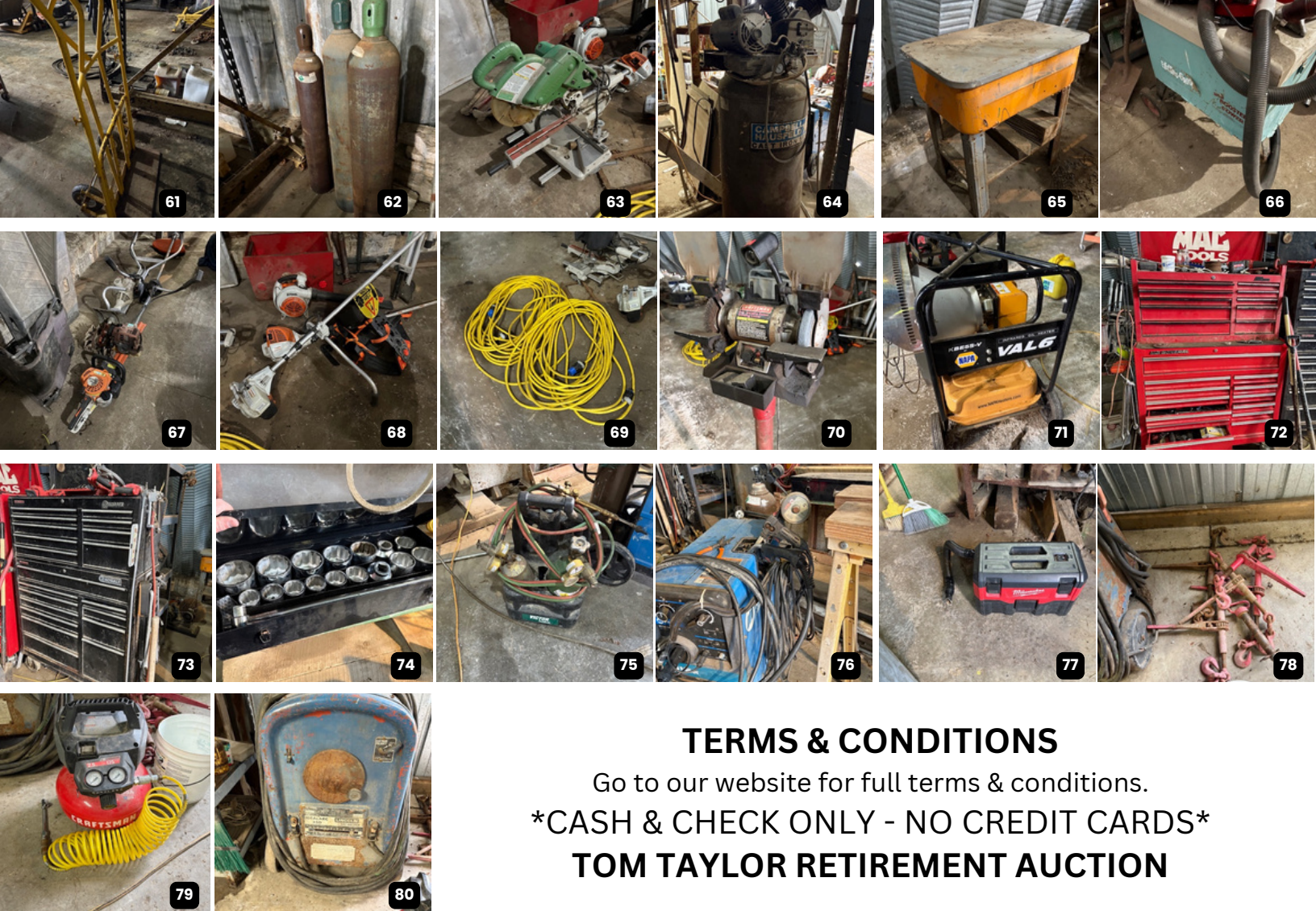
48	1" DRIVE IMPACT AIR
----	----------------------------

59	OVERHEAD ROLLING FRAME CRANE
----	-------------------------------------

49	JOHN DEERE PRESSURE WASHER
----	-----------------------------------

60	PORT A POWER
----	---------------------





TERMS & CONDITIONS

Go to our website for full terms & conditions.

CASH & CHECK ONLY - NO CREDIT CARDS

TOM TAYLOR RETIREMENT AUCTION

OTHER ITEMS

61 [2 WHEEL CART](#)

62 [AIR CYLINDER](#)

63 [HITACHI COMPOUND MITER SAW](#)

64 [UPRIGHT AIR COMPRESSOR](#)

65 [PARTS WASHING TANK](#)

66 [ELECTRO GROOM VACUUM](#)

67 [STIHL HEDGE TRIMMER & TILLER](#)

68 [STIHL LEAF BLOWER & HEDGE TRIMMER](#)

69 [HEAVY DUTY EXTENSION CORDS](#)

70 [BENCH GRINDER](#)

71 [NAPA INFRARED OIL HEATER](#)

72 [MAC ROLL AROUND TOOL BOX](#)

73 [KOBALT ROLL AROUND TOOL BOX](#)

74 [PITTSBURGH 1" DRIVE SOCKET SET](#)

75 [OXY ACETYLENE TORCH](#)

76 [MILLERMATIC 210 WELDER](#)

77 [MILWAUKEE VACUUM](#)

78 [CHAIR BINDERS](#)

79 [AIR COMPRESSOR](#)

80 [LINCOLN IDEALARC 250 WELDER](#)

**SCAN THE QR CODE FOR A MORE IN DETAILED LOOK OF OUR EQUIPMENT
ITEMS OR CALL TODAY WITH ANY QUESTIONS!**





HUGE INVENTORY OF AGRICULTURE, CONSTRUCTION, TRUCKS AND TRAILER EQUIPMENT

LIVE PUBLIC AUCTION

419-516-4106

MARCH 29, 2025 AT 10:00 AM
AUCTION LOCATION
7179 Donovan Rd., Ostrander, OH
FOR ALL OTHER INFO GO TO
WWW.DYEREALESTATE.COM

AUCTIONEERS: DEVIN DYE | MATT BOWERS | MIKE REINDEL (LICENSED & BONDED IN FAVOR OF THE STATE OF OHIO)



**REAL ESTATE
& LAND COMPANY**