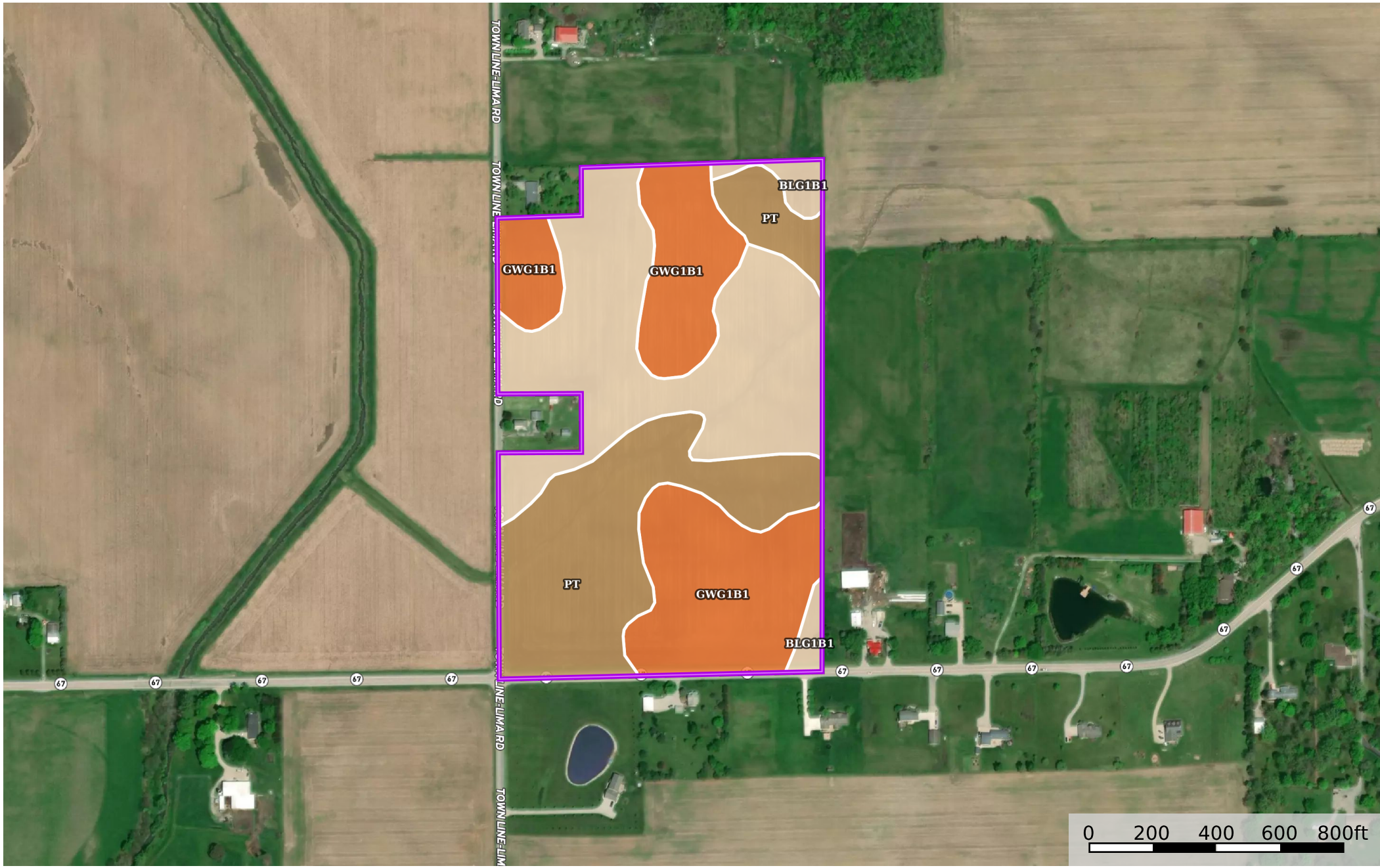


35 Acres Auglaize County - Carter

Auglaize County, Ohio, 35 AC +/-



 Boundary

Boundary 35.26 ac

SOIL CODE	SOIL DESCRIPTION	ACRES	%	CPI	NCCPI	CAP
Blg1B1	Blount silt loam, ground moraine, 2 to 4 percent slopes	13.1	37.14	0	67	2e
Gwg1B1	Glynwood silt loam, ground moraine, 2 to 6 percent slopes	11.6	32.89	0	67	2e
Pt	Pewamo silty clay loam, 0 to 1 percent slopes	10.56	29.94	0	76	2w
TOTALS		35.26(*)	100%	-	69.68	2.0

(*) Total acres may differ in the second decimal compared to the sum of each acreage soil. This is due to a round error because we only show the acres of each soil with two decimal.

