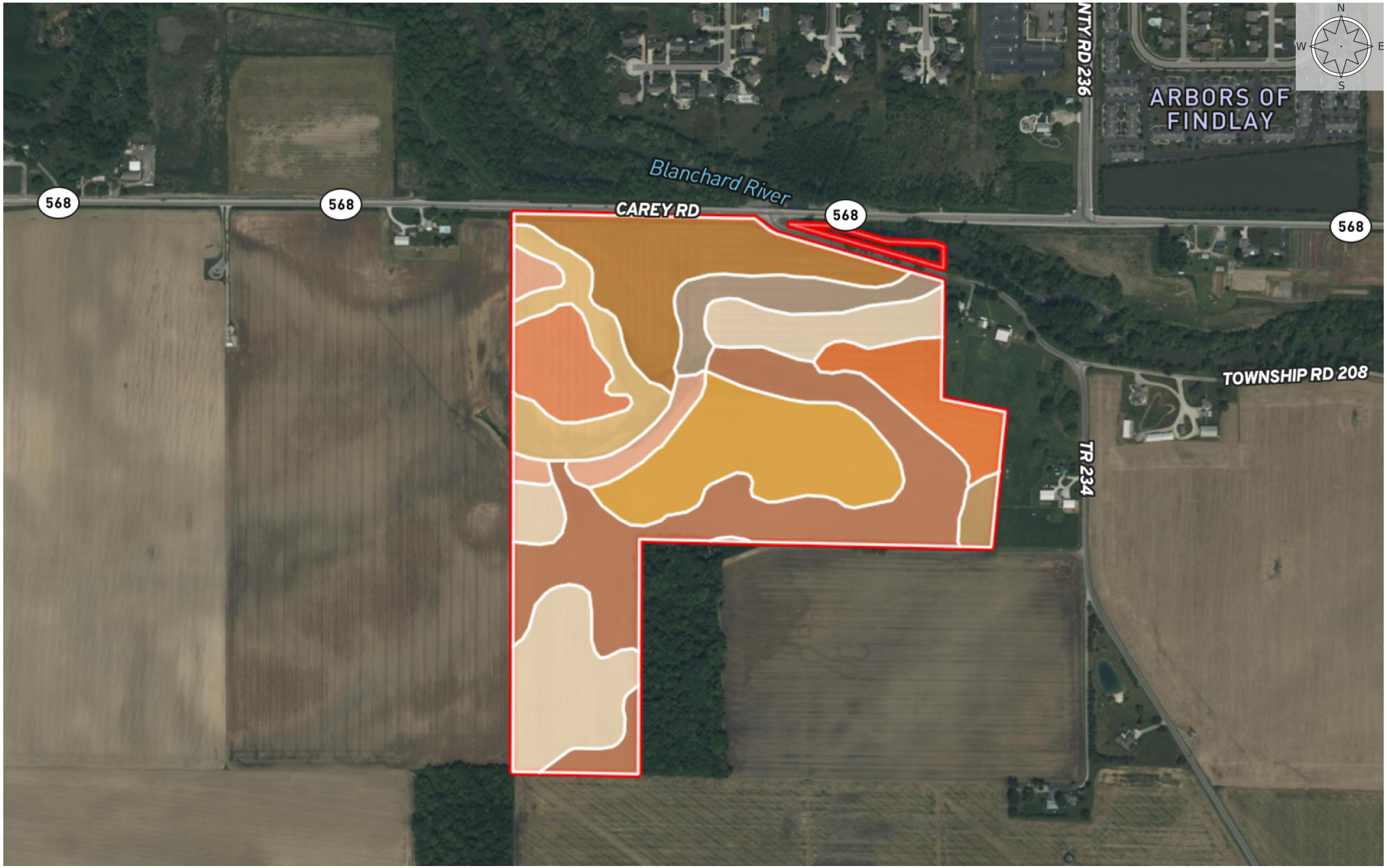


88 +/- Acres Hancock County_Burkholder

Hancock County, Ohio, 84.328 AC +/-



 Boundary

|  Boundary 85.25 ac

SOIL CODE	SOIL DESCRIPTION	ACRES	%	CPI	NCCPI	CAP
PmA	Pewamo silty clay loam, 0 to 1 percent slopes	20.98	24.61	0	76	2w
ThA	Thackery loam, till substratum, 0 to 2 percent slopes	14.4	16.89	62	92	1
SeA	Shawtown loam, 0 to 2 percent slopes	12.73	14.93	65	75	1
McA	Medway silt loam, limestone substratum, 0 to 2 percent slopes, occasionally flooded	11.74	13.77	69	78	2w
SpA	Sloan silty clay loam, limestone substratum, 0 to 1 percent slopes, occasionally flooded	6.6	7.74	62	51	3w
LbA	Lamberjack loam, 0 to 2 percent slopes	5.12	6.01	67	79	2w
FdA	Flatrock silt loam, limestone substratum, 0 to 2 percent slopes, occasionally flooded	4.61	5.41	69	82	2w
SeB	Shawtown loam, 2 to 6 percent slopes	4.61	5.41	64	75	2e
OsB	Oshtemo sandy loam, till substratum, 2 to 6 percent slopes	3.3	3.87	57	70	3e
BrA	Blount-Jenera complex, 0 to 3 percent slopes	1.11	1.3	73	73	2w
BpA	Blount-Houcktown complex, 0 to 3 percent slopes	0.05	0.06	72	70	2w
TOTALS		85.25(*)	100%	48.9	77.08	1.8









(*) Total acres may differ in the second decimal compared to the sum of each acreage soil. This is due to a round error because we only show the acres of each soil with two decimal.

Capability Legend

Increased Limitations and Hazards

Decreased Adaptability and Freedom of Choice Users

Land, Capability

								
	1	2	3	4	5	6	7	8
'Wild Life'	•	•	•	•	•	•	•	•
Forestry	•	•	•	•	•	•	•	
Limited	•	•	•	•	•	•	•	
Moderate	•	•	•	•	•	•		
Intense	•	•	•	•	•			
Limited	•	•	•	•				
Moderate	•	•	•					
Intense	•	•						
Very Intense	•							

Grazing Cultivation

(c) climatic limitations (e) susceptibility to erosion

(s) soil limitations within the rooting zone (w) excess of water