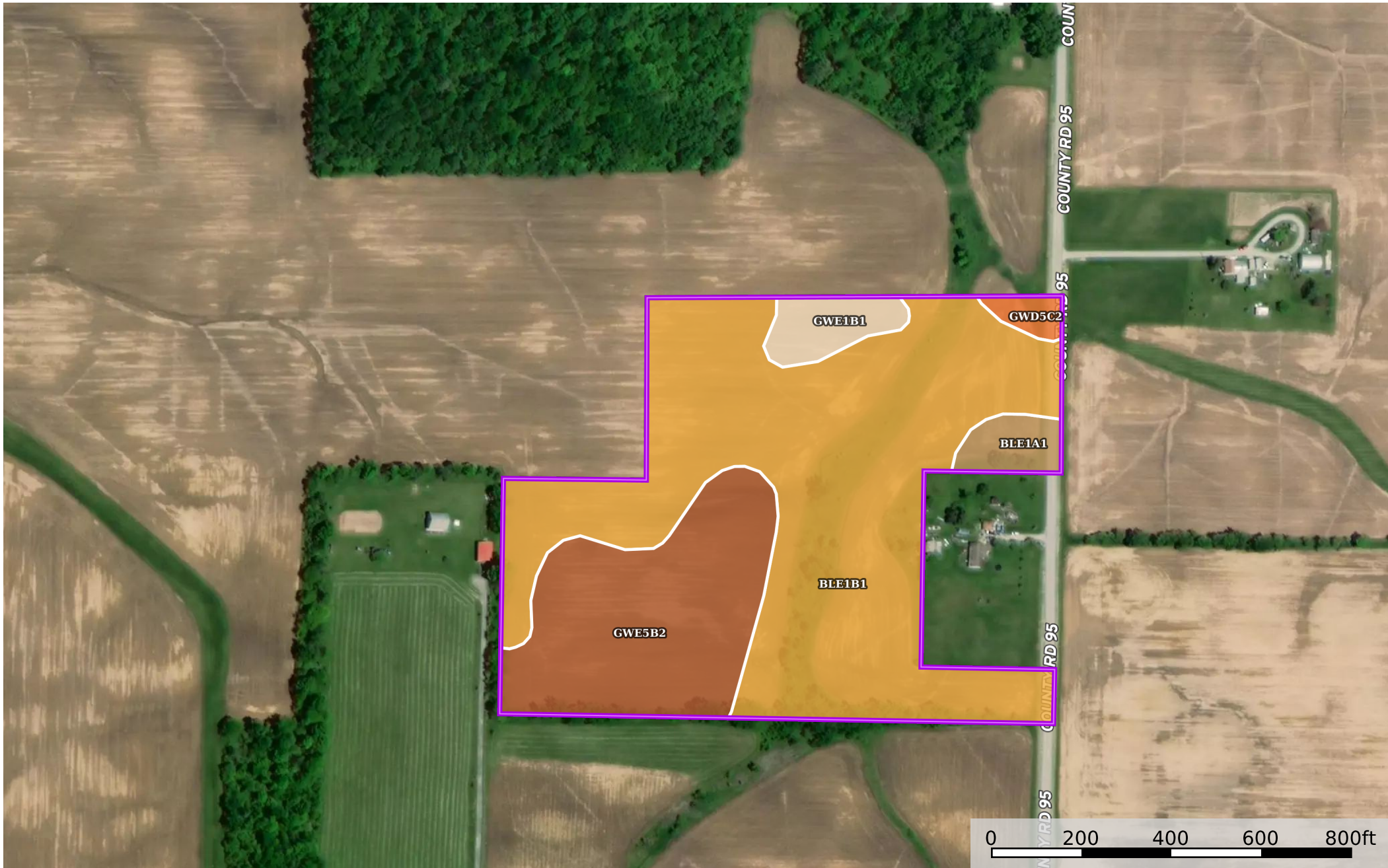


21.058 Acres Hardin County (Burkholder)
Hardin County, Ohio, 21.058 AC +/-



 Boundary

Boundary 20.57 ac

SOIL CODE	SOIL DESCRIPTION	ACRES	%	CPI	NCCPI	CAP
Ble1B1	Blount silt loam, end moraine, 2 to 4 percent slopes	13.63	66.26	0	67	2e
Gwe5B2	Glynwood clay loam, end moraine, 2 to 6 percent slopes, eroded	5.22	25.38	0	56	2e
Gwe1B1	Glynwood silt loam, end moraine, 2 to 6 percent slopes	0.8	3.89	0	66	2e
Ble1A1	Blount silt loam, end moraine, 0 to 2 percent slopes	0.62	3.01	0	69	2w
Gwd5C2	Glynwood clay loam, 6 to 12 percent slopes, eroded	0.3	1.46	63	56	4e
TOTALS		20.57(*)	100%	0.92	64.07	2.03

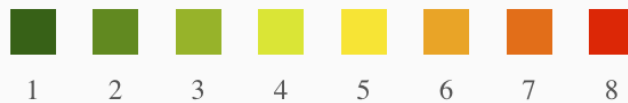
(*) Total acres may differ in the second decimal compared to the sum of each acreage soil. This is due to a round error because we only show the acres of each soil with two decimal.

Capability Legend

Increased Limitations and Hazards

Decreased Adaptability and Freedom of Choice Users

Land, Capability



	1	2	3	4	5	6	7	8
'Wild Life'	•	•	•	•	•	•	•	•
Forestry	•	•	•	•	•	•	•	
Limited	•	•	•	•	•	•	•	
Moderate	•	•	•	•	•	•		
Intense	•	•	•	•	•			
Limited	•	•	•	•				
Moderate	•	•	•					
Intense	•	•						
Very Intense	•							

Grazing Cultivation

(c) climatic limitations (e) susceptibility to erosion

(s) soil limitations within the rooting zone (w) excess of water